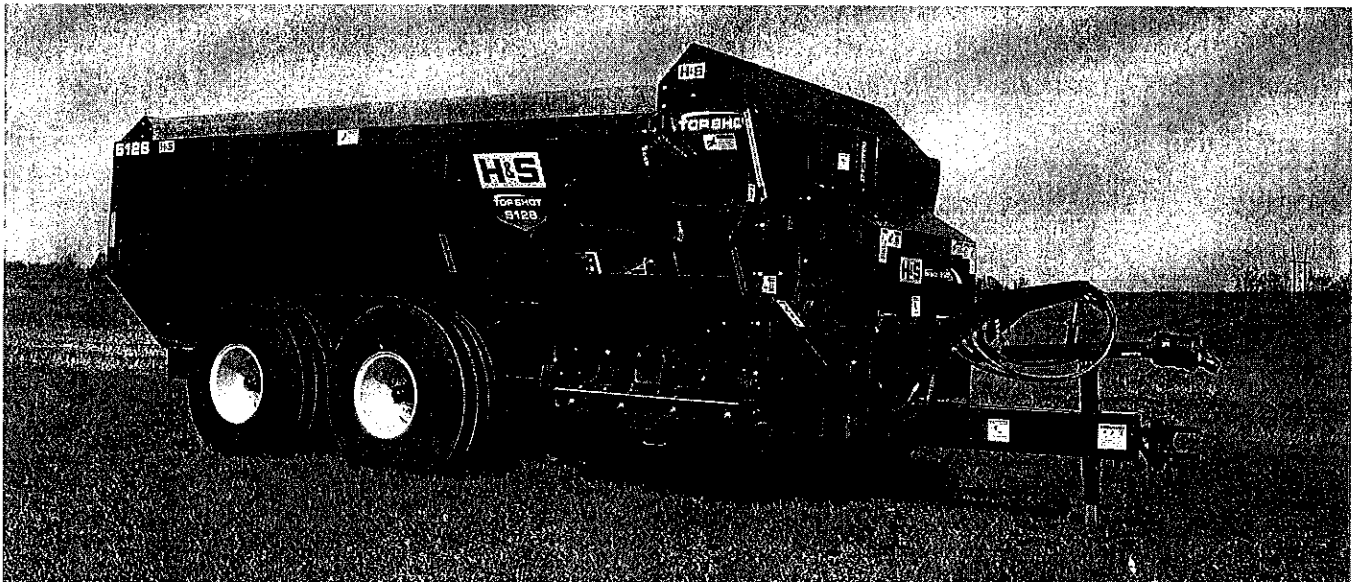


H&S

5120/5126 *Top Shot* Manure Spreaders



WARNING

READ AND UNDERSTAND THIS MANUAL
BEFORE OPERATING THIS EQUIPMENT

UNSAFE OPERATION OR MAINTENANCE OF THIS EQUIPMENT CAN RESULT IN
SERIOUS INJURY OR DEATH

OPERATOR'S MANUAL AND PARTS LIST

5120 Starting Serial #011001
5126 Starting Serial #012001

HSMFG1010

Manufactured By

H&S MANUFACTURING CO., INC.

P.O. BOX 768 (715) 387-3414 FAX (715) 384-5463
MARSHFIELD, WISCONSIN 54449

H&S 5120/5126 Top Shot
OPERATOR'S & PARTS MANUAL

CONTENTS

Warranty & Warranty Registration Card.	1-2
Dealer Pre-Delivery & Delivery Checklist.	3-6
Be Alert Symbol.	7
Explanation of Safety Signs.	8
Danger - Warning Signs.	9-10
Warning - Owner Must Read and Understand.	11
Bolt Torque Chart.	12
Set-Up & Assembly.	13
Preparing for Operation.	14-16
Transporting.	17
Storage.	17
Operation.	18-23
Adjustments.	24-25
Service.	26-27
Lubrication Guide.	28-31
Optional Features & Accessories.	32
Troubleshooting Guide.	33
Decal Location & Identification.	34-36
Instructions for Ordering Parts - About Improvements.	37
Service and Parts Notes.	38-39
Parts.	40-73
Specifications.	74-75

Figure 1

Auger/Liner/Sides Hitch

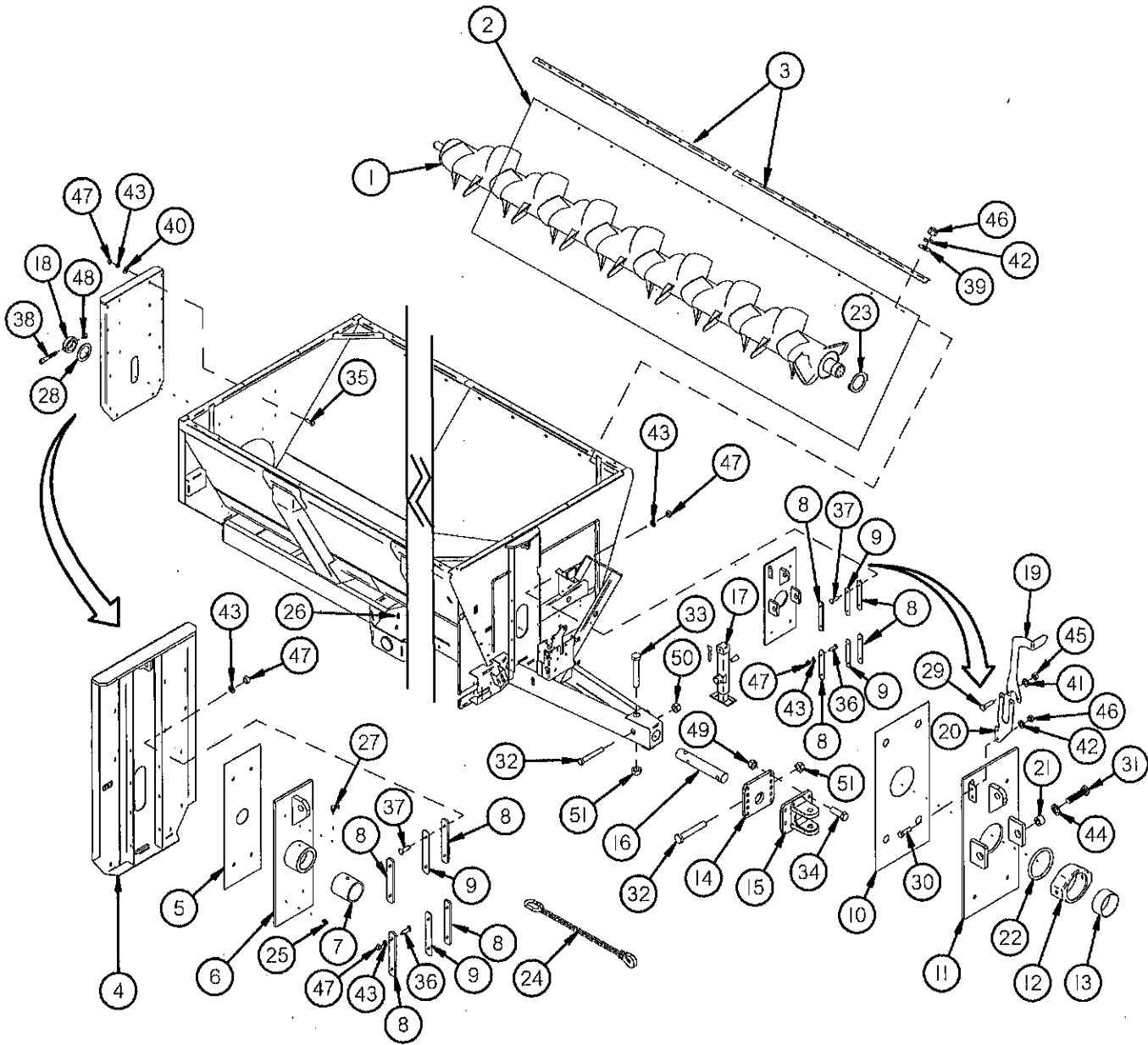


Figure 1

Auger/Liner/Sides Hitch

ITEM.#	QUANTITY		PART #	DESCRIPTION
	5120	5126		
1	1	"	TS1	AUGER
2	1	—	TS2	TUB SIDE POLY
*	—	1	TS3	TUB SIDE POLY
3	1	"	TS4	POLY TOP HOLD DOWN
4	1	—	TS5	BACK PANEL
*	—	1	TS6	BACK PANEL
5	1	"	TS7	BACK SLIDER POLY
6	1	—	TS8	BACK SLIDER
*	—	1	TS309	BACK SLIDER
7	1	"	TS9	REAR AUGER BUSHING
8	8	"	TS10	SLIDER GUIDE
9	4	"	TS308	SLIDER GUIDE THIN
10	1	"	TS11	FRONT POLY SLIDE
11	1	"	TS12	FRONT SLIDE PLATE
12	1	"	TS14	TRUNNION HOUSING
13	1	"	TS15	FRONT AUGER BEARING
14	1	"	TS16	ADJUSTABLE SCALE HITCH MOUNT
15	1	"	TS17	SCALE HITCH ADJUSTABLE CLEVIS
16	1	"	GM73	HITCH BAR STRAIGHT
17	1	"	TS306	JACK, SIDE WIND, 7000LBS
18	1	"	TS19	AUGER BACK COLLAR
19	1	"	TS207	AUGER INDICATOR TOP
20	1	"	TS208	AUGER INDICATOR BOTTOM
21	2	"	TS330	TRUNION PIVOT BUSHING
22	1	"	TS33	AUGER SPROCKET RUBBER GASKET
23	1	"	TS102	TRUNION SPACER
24	1	"	WM367	SAFETY CHAIN
25	4	"	G89	1/4" GREASE ZERK
26	2	"	BFR28	1/8" NPT GREASE ZERK
27	1	"	RG51	90° GREASE ZERK
28	AVR	"	TS227	SPACER 2-17/32" (THICK)
*	AVR	"	TS28	SPACER 2-17/32" (THIN)
29	2	"	YBHH08100	BOLT, 1/4" X 3/4" GR. 5
30	2	"	YBHH10105	BOLT, 5/16" X 3/4" GR. 5
31	2	"	YBHH20022	BOLT, 5/8" X 1-3/4" GR. 8
32	1	"	YBHH24083	BOLT, 3/4" X 5" GR. 8
33	2	"	YBHH32032	BOLT, 1" X 5" GR. 8
34	4	"	YBHH24031	BOLT, 3/4"-16 X 2-1/2" GR. 8
35	14	18	YBCR12010	CARR. BOLT, 3/8" X 1" GR. 5
36	8	"	YBCR12020	CARR. BOLT, 3/8" X 1-1/4" GR. 5
37	8	"	YBCR12015	CARR. BOLT, 3/8" X 1-1/2" GR. 5
38	1	"	YSHS12018	SOCKET HEAD CAP SCREW, 3/8" X 4"
39	12	"	YWFL10005	WASHER, FLAT, 5/16" USS
40	14	18	YWFL12005	WASHER, FLAT, 3/8" USS
41	2	"	YWLO08005	WASHER, LOCK, 1/4"
42	14	"	YWLO10005	WASHER, LOCK, 5/16"
43	30	34	YWLO12005	WASHER, LOCK, 3/8"
44	2	"	YWLO20005	WASHER, LOCK, 5/8"
45	2	"	YNHX08005	HEX NUT, 1/4"-20
46	14	"	YNHX10005	HEX NUT, 5/16"
47	30	34	YNHX12005	HEX NUT, 3/8"-16
48	1	"	YNTL12005	HEX NUT, TOP LOCK, 3/8"-16
49	4	"	YNTL24010	HEX NUT, TOP LOCK, 3/4"-16 GR. 8
50	1	"	YNRL24005	HEX NUT, REVERSIBLE-SIDE LOCK, 3/4"-10
51	2	"	YNRL32005	HEX NUT, REVERSIBLE-SIDE LOCK, 1"-8

NOTE: * MEANS NOT SHOWN

— MEANS NOT USED ON THIS MODEL

" MEANS SAME AS PREVIOUS MODEL

AVR: MEANS AS REQUIRED

Figure 2 Auger Drive

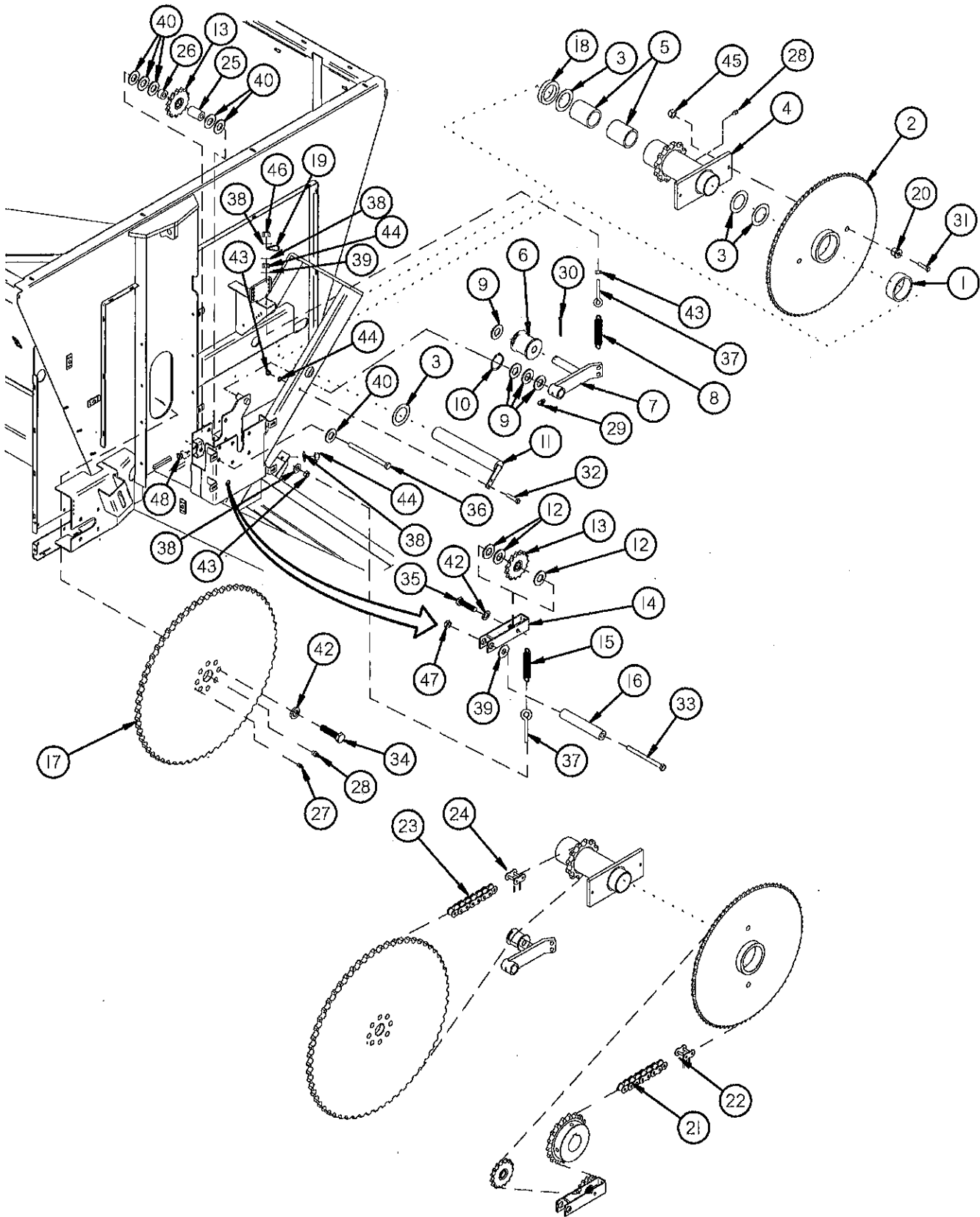


Figure 2 Auger Drive

ITEM #	QUANTITY		PART #	DESCRIPTION
	5120	5126		
1	1	"	TS20	BUSHING/BRONZE
2	1	"	TS21	SPROCKET/ASSY 80T (540 RPM)
*	1	"	TS312	SPROCKET/ASSY 119T (1000 RPM)
3	A/R	"	TS22	SPACER, 2"
*	A/R	"	56N183	SPACER
4	1	"	TS23	COUNTER SHAFT ASSEMBLY
5	2	"	TS24	BRONZE BUSHING
6	1	"	TS25	ROLLER IDLER
7	1	"	TS26	AUGER CHAIN TENSIONER
8	1	"	BFR138	SPRING
9	3	"	S345	1" SPACER
10	1	"	3G21	SNAP RING
11	1	"	TS27	COUNTER SHAFT
12	A/R	"	T73	SPACER
*	A/R	"	16SV49	SPACER
13	2	"	TS29	SPROCKET/IDLER ASSY
14	1	"	TS30	IDLER ASSY
15	1	"	ST36	SPRING/EXTENSION
*	1	"	GM410	SPRING (1000 RPM ONLY)
16	1	"	TS31	TENSIONER PIVOT TUBE
17	1	"	TS32	SPROCKET #100x60T ASSY
18	1	"	TS328	REDUCTION LARGE SPACER
19	1	"	HGV72	SMALL TUBE HOLDER
20	2	"	TS34	HARDENED SHEAR BUSHING
21	1	"	TS39	CHAIN/ROLLER #60HE X 138 (540 RPM - 18T & 15T SPROCKETS)
*	1	"	TS360	CHAIN/ROLLER #60HE X 136 (540 RPM - 13T SPROCKET)
*	1	"	TS361	CHAIN/ROLLER #60HE X 140 (540 RPM - 20T SPROCKET)
*	1	"	TS313	CHAIN/ROLLER #60HE X 166 (1000 RPM - 15T SPROCKET)
*	1	"	TS362	CHAIN/ROLLER #60HE X 165 (1000 RPM - 13T SPROCKET)
*	1	"	TS363	CHAIN/ROLLER #60HE X 167 (1000 RPM - 16T SPROCKET)
22	1	"	TS40	LINK/CONNECTOR #60HE
23	1	"	TS41	CHAIN/ROLLER #100HE X 74
24	1	"	TS42	LINK/CONNECTOR #100HE
25	1	"	TS396	IDLER FRONT SPACER
26	1	"	TS397	IDLER REAR SPACER
27	1	"	G89	GREASE ZERK
28	2	"	BFR28	1/8" NPT GREASE ZERK #1610
29	1	"	RG51	1/4"-28 90° GREASE ZERK #1911
30	1	"	YPCT06005	COTTER PIN, 3/16" X 1-1/2"
31	2	"	YBHH10036	BOLT, 5/16" X 1-1/2" GR. 8 YELLOW ZINC
*	4	"	YBHH10036	BOLT, 5/16" X 1-1/2" GR. 8 YELLOW ZINC
32	1	"	YBHH12100	BOLT, 3/8" X 2-1/4" GR. 5
33	1	"	YBHH16175	BOLT, 1/2" X 6-1/2" GR. 5
34	8	"	YBHH20036	BOLT, 5/8" X 2-1/2" GR. 8 YELLOW ZINC
35	1	"	YBHH20025	BOLT, 5/8" X 2" GR. 5
36	1	"	YBHH20100	BOLT, 5/8" X 6" GR. 5
37	2	"	YBTE12025	TURNED EYE BOLT, 3/8" X 3" FULL THREAD
38	4	"	YWFL12005	WASHER, FLAT, 3/8" USS
39	2	"	YWFL16005	WASHER, FLAT, 1/2" USS
40	A/R	"	YWFL20005	WASHER, FLAT, 5/8" USS
41	1	"	YWLO12005	WASHER, LOCK, 3/8"
42	9	"	YWLO20005	WASHER, LOCK, 5/8"
43	3	"	YNHX12005	HEX NUT, 3/8"-16
44	2	"	YNNY12005	HEX NUT, NYLON LOCKNUT, 3/8"
45	2	"	YNTL10005	HEX NUT, TOP LOCK, 5/16"-18
46	1	"	YNTL12005	HEX NUT, TOP LOCK, 3/8"-16
47	1	"	YNTJ16005	HEX NUT, TOP LOCK, JAM, 1/2"-13
48	1	"	YNTJ20005	HEX NUT, TOP LOCK, JAM, 5/8"-11, ZINC FINISH GRADE A

NOTE: * MEANS NOT SHOWN

" MEANS SAME AS PREVIOUS MODEL

A/R: AS REQUIRED

Figure 3
Expeller/Discharge Gate - Bearings

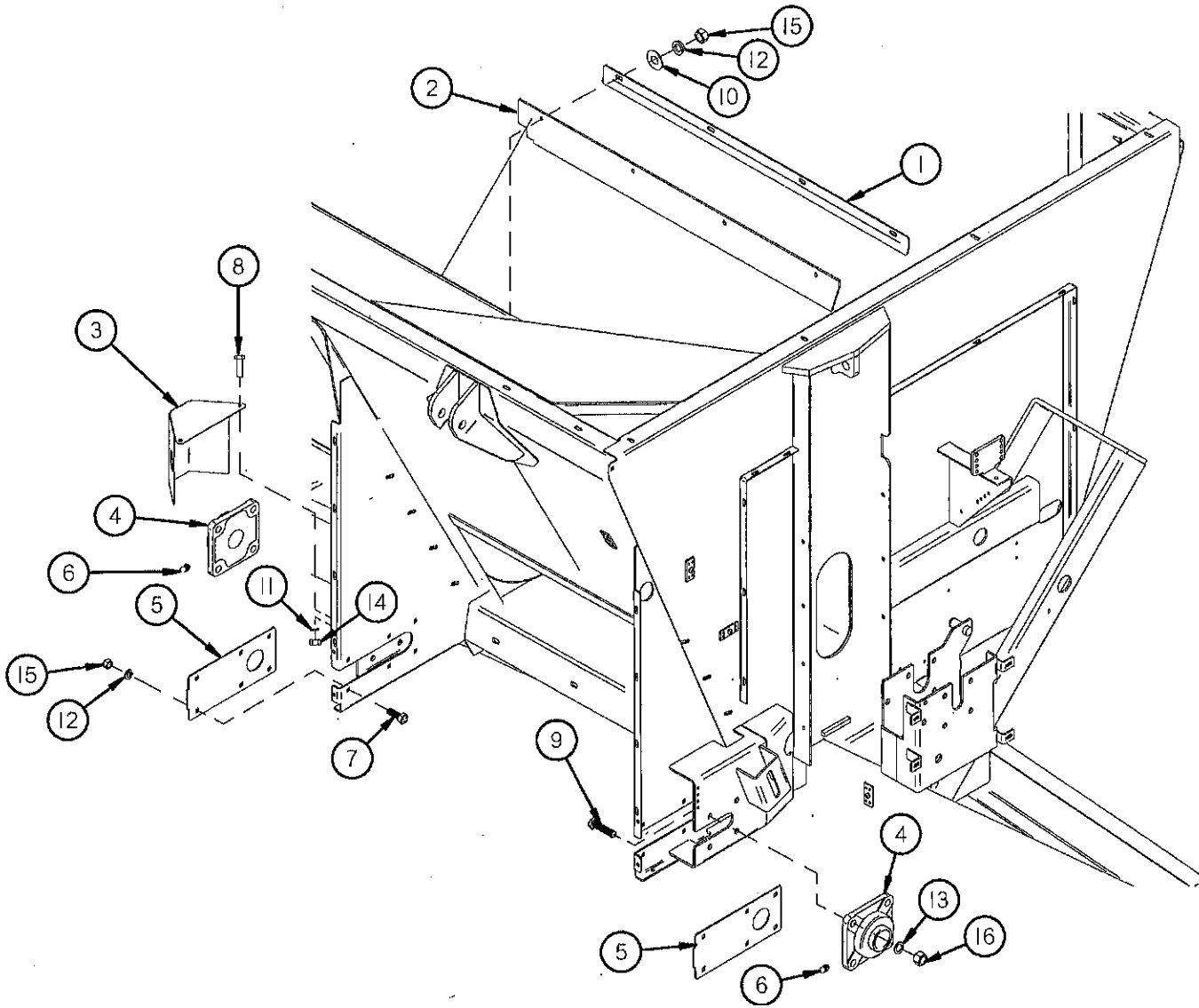


Figure 3 Expeller/Discharge Gate - Bearings

<u>ITEM #</u>	<u>QUANTITY</u>		<u>PART #</u>	<u>DESCRIPTION</u>
	<u>5120</u>	<u>5126</u>		
1	1	"	TS43	DOOR SEAL CLAMP
2	1	"	TS44	EXPELLER DOOR TOP SEAL
3	1	"	TS45	EXPELLER BEARING SHIELD
4	2	"	HGV41	EXPELLER BEARING
5	2	"	TS47	COVER PLATE
6	2	"	G89	GREASE ZERK
7	12	"	YBCR12010	CARR. BOLT, 3/8" X 1" GR. 5
8	2	"	YBHH08100	BOLT, 1/4" X 3/4" GR. 5
9	8	"	YBHH18010	BOLT, 9/16" X 1-3/4" GR. 5
10	4	"	YWFL12005	WASHER, FLAT, 3/8" USS
11	2	"	YWLO08005	WASHER, LOCK, 1/4"
12	16	"	YWLO12005	WASHER, LOCK, 3/8"
13	8	"	YWLO18005	WASHER, LOCK, 9/16"
14	2	"	YNHX08005	HEX NUT, 1/4"-20
15	16	"	YNHX12005	HEX NUT, 3/8"-16
16	8	"	YNHX18005	HEX NUT, 9/16"-12

NOTE: " MEANS SAME AS PREVIOUS MODEL

Figure 4
Expeller/Discharge Gate - Door

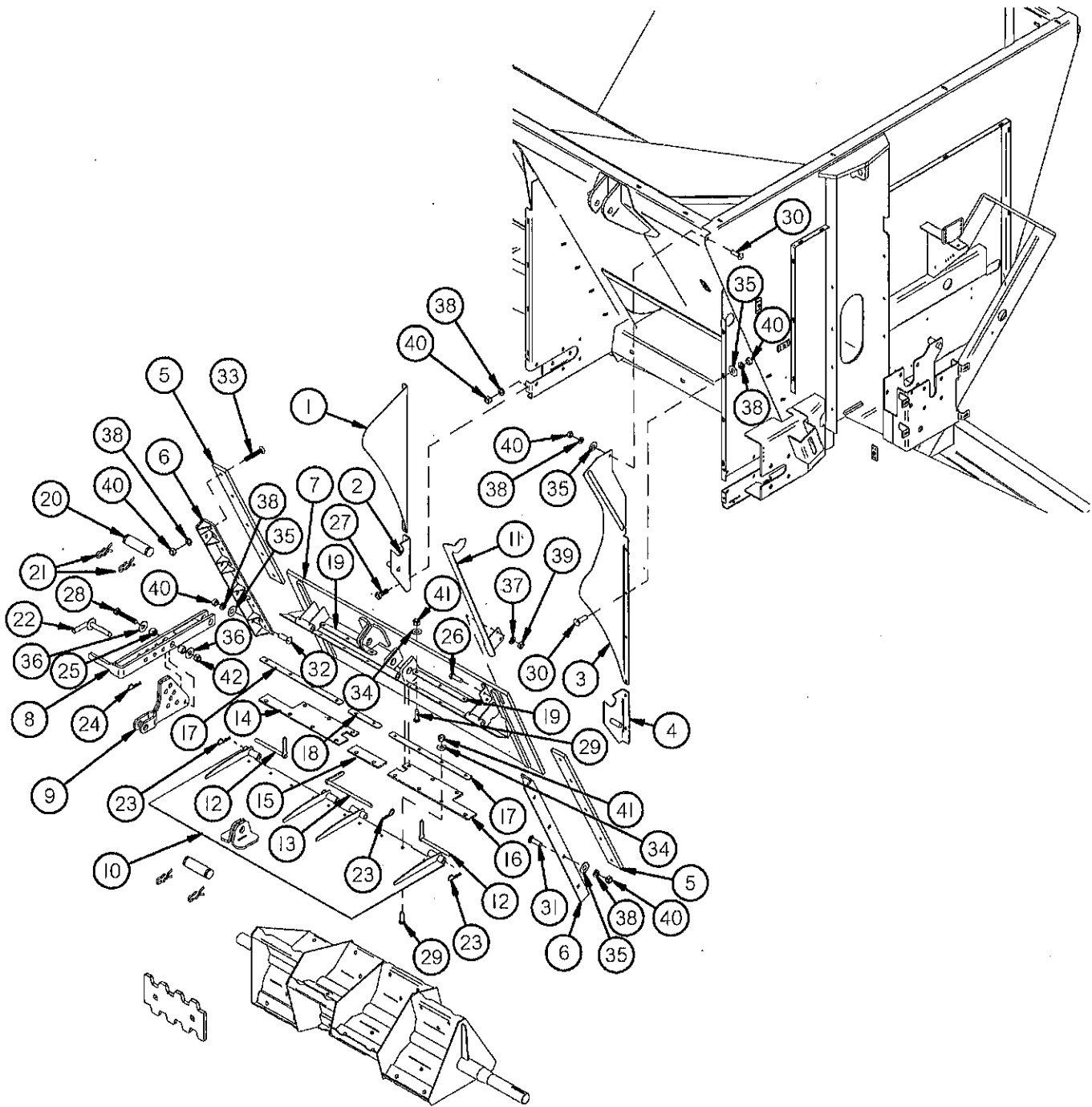


Figure 4 Expeller/Discharge Gate - Door

ITEM #	QUANTITY		PART #	DESCRIPTION
	5120	5126		
1	1	"	TS48	EXPELLER PANEL EXTENSION LEFT HAND
2	1	"	TS49	PAN HINGE BRACKET LEFT
3	—	1	TS50	EXPELLER PANEL EXTENSION RIGHT HAND
*	1	—	TS327	EXPELLER SPOUT RH
4	1	"	TS51	PAN HINGE BRACKET RIGHT
5	2	"	TS52	DOOR SLIDER POLY
6	2	"	TS53	EXPELLER DOOR GUIDE
7	1	"	TS54	EXPELLER DOOR
8	1	"	TS55	DEFLECTOR ADJUSTMENT HANDLE
9	1	"	TS56	DEFLECTOR ADJUSTMENT LINK
10	1	"	TS57	ADJUSTABLE FLAT DEFLECTOR
11	1	"	TS58	DOOR INDICATOR
12	2	"	TS59	DEFLECTOR SIDE PIN
13	1	"	TS60	DEFLECTOR MID PIN
14	1	"	TS61	DEFLECTOR SEAL LEFT
15	1	"	TS62	DEFLECTOR SEAL MID
16	1	"	TS63	DEFLECTOR SEAL RIGHT
17	2	"	TS64	SEAL STRAP LONG
18	1	"	TS65	SEAL STRAP MID
19	2	"	TS66	SEAL STRAP SHORT
20	2	"	T143	CYLINDER PIN
21	4	"	T144	CLIP PIN
22	1	"	TS69	CASTER LOCKING PIN
23	3	"	X97	HAIR PIN
24	1	"	WM378	HAIR PIN W/ LANYARD
25	2	"	TS307	HANDLE PIVOT
26	2	"	YBHH10105	BOLT, 5/16" X 3/4" GR. 5
27	4	"	YBHH12010	BOLT, 3/8" X 1" GR. 5
28	1	"	YBHH16105	BOLT, 1/2" X 3" GR. 5
29	16	"	YBCR10010	CARR. BOLT, 5/16" X 1" GR. 5
30	9	"	YBCR12010	CARR. BOLT, 3/8" X 1" GR. 5
31	7	"	YBCR12020	CARR. BOLT, 3/8" X 1-1/4" GR. 5
32	1	"	YBCR12015	CARR. BOLT, 3/8" X 1-1/2" GR. 5
33	10	"	YSFS12005	FLAT HEAD SOCKET CAP SCREW, 3/8" X 1-1/4"
34	16	"	YWFL10005	WASHER, FLAT, 5/16" USS
35	17	"	YWFL12005	WASHER, FLAT, 3/8" USS
36	2	"	YWFL16005	WASHER, FLAT, 1/2" USS
37	2	"	YWLO10005	WASHER, LOCK, 5/16"
38	31	"	YWLO12005	WASHER, LOCK, 3/8"
39	2	"	YNHX10005	HEX NUT, 5/16"
40	31	"	YNHX12005	HEX NUT, 3/8"-16
41	16	"	YNTL10005	HEX NUT, TOP LOCK, 5/16"-18
42	1	"	YNTL16005	HEX NUT, TOP LOCK, 1/2"-13

NOTE: " MEANS SAME AS PREVIOUS MODEL
 — MEANS NOT USED ON THIS MODEL
 * MEANS NOT SHOWN

Figure 5
Expeller/Discharge Gate - Pan

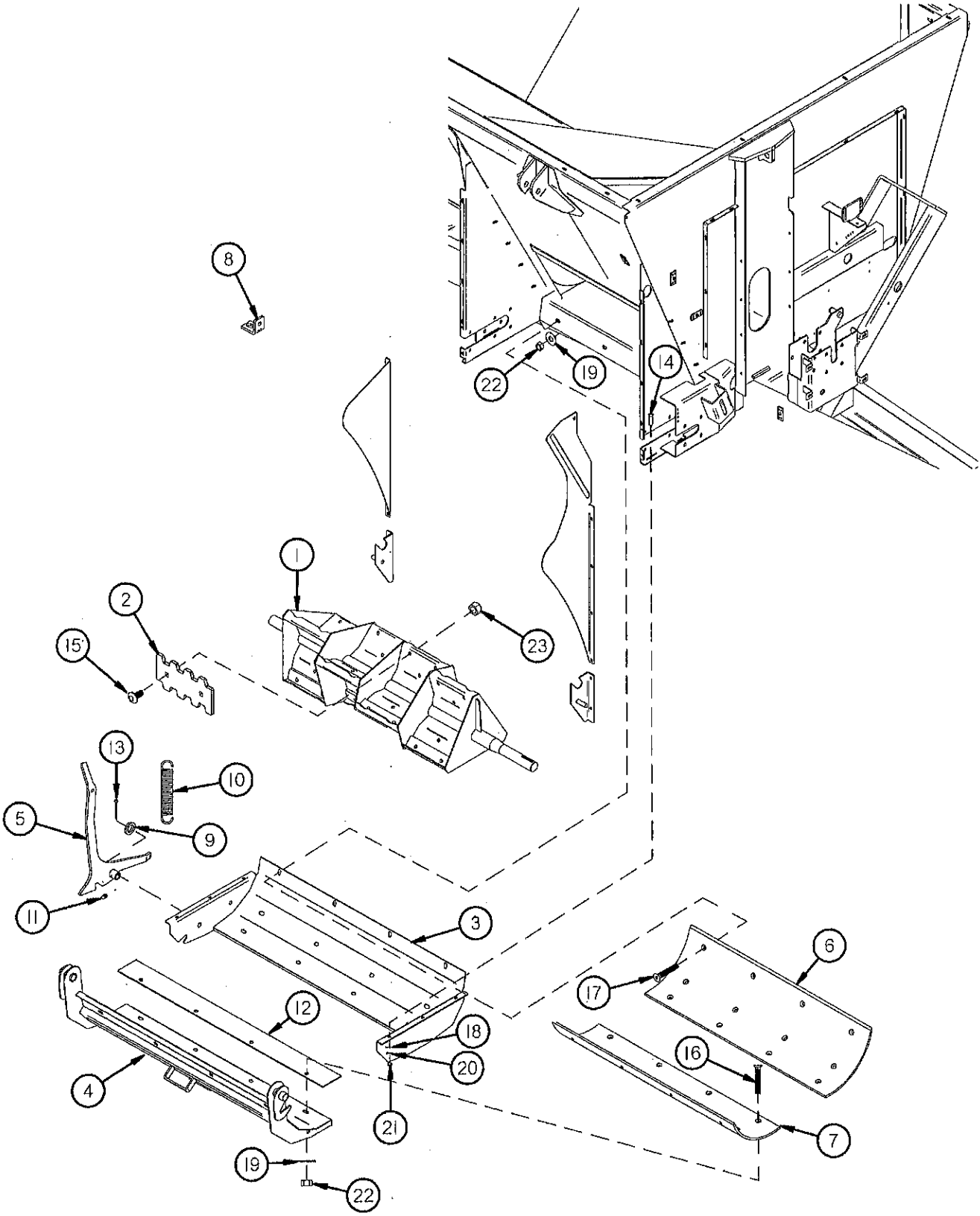


Figure 5 Expeller/Discharge Gate - Pan

ITEM #	QUANTITY		PART #	DESCRIPTION
	5120	5126		
1	1	"	TS67	EXPELLER
2	12	"	TS68	EXPELLER PADDLE
3	1	"	TS72	SWING AWAY PAN FRAME
4	1	"	TS73	SWING AWAY PAN
5	1	"	TS74	PAN LATCH HANDLE
6	1	"	TS75	EXPELLER BACK POLY
7	1	"	TS76	EXPELLER PAN POLY
8	1	"	56N146	SHIELD ANGLE
9	3	"	T73	SPACER
10	1	"	K103	SPRING
11	1	"	G89	GREASE ZERK
12	1	"	TS18	PAN RUBBER SEAL
13	1	"	YPCT06010	COTTER PIN, 3/16" X 1-1/4"
14	6	"	YBCR10010	CARR. BOLT, 5/16" X 1" GR. 5
15	24	"	YBCR16019	SHAKER SCREEN BOLT, 1/2" X 1-3/4" GR. 8
16	20	"	YSFS16010	FLAT HEAD SOCKET CAP SCREW, 1/2" X 1-1/2"
17	4	"	YSFS16020	FLAT HEAD SOCKET CAP SCREW, 1/2" X 1-3/4"
18	6	"	YWFL10005	WASHER, FLAT, 5/16" USS
19	24	"	YWFL16005	WASHER, FLAT, 1/2" USS
20	6	"	YWLO10005	WASHER, LOCK, 5/16"
21	6	"	YNHX10005	HEX NUT, 5/16"
22	24	"	YNRL16005	HEX NUT, REVERSIBLE-SIDE LOCK, 1/2"-13
23	24	"	YNRL16006	HEX NUT, TOP LOCK, 1/2"-13 GR. 9

NOTE: " MEANS SAME AS PREVIOUS MODEL

Figure 6 Input Shaft/Expeller Drive

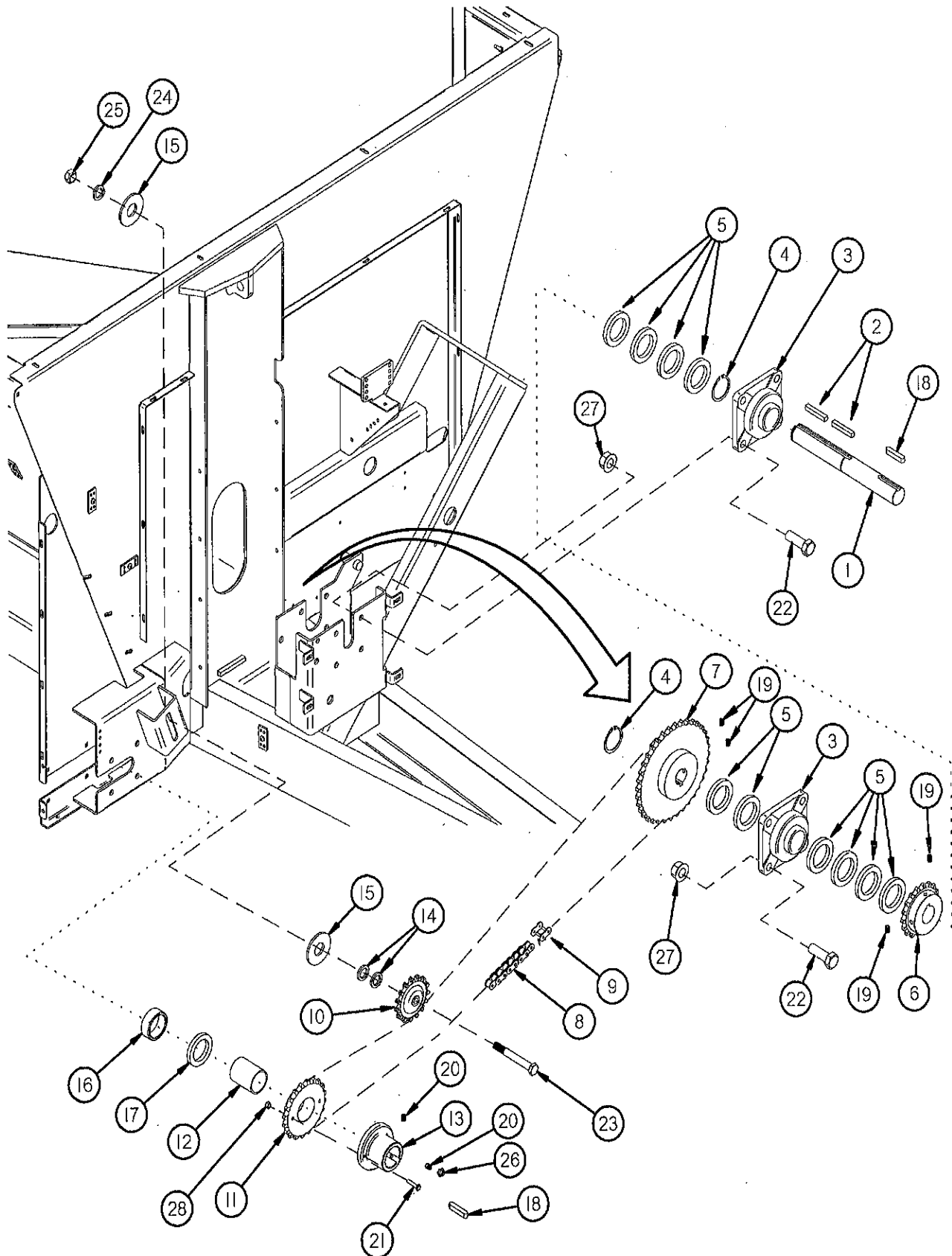


Figure 6 Input Shaft/Expeller Drive

ITEM #	QUANTITY		PART #	DESCRIPTION
	5120	5126		
1	1	"	TS77	INPUT SHAFT
2	2	"	16SV90	3/8" X 1-1/4" SQ. KEY
3	2	"	12V67	BEARING
4	2	"	12V62	SNAP RING
5	A/R	"	16SV374	SPACER
*	A/R	"	16SV375	SPACER
*	A/R	"	16SV439	SPACER
*	1	"	33SV29	SPACER
6	1	"	TS35	SPROCKET/60B18 (STANDARD - 540 RPM)
*	1	"	TS36	SPROCKET/ASSY 13T (OPTIONAL - 540 RPM & 1000 RPM)
*	1	"	TS37	SPROCKET/60B15T (OPT. - 540 RPM) (STANDARD - 1000 RPM)
*	1	"	TS38	SPROCKET/60B20 (OPTIONAL - 540 RPM)
*	1	"	TS364	SPROCKET/60B16 (OPTIONAL - 1000 RPM)
7	1	"	TS79	SPROCKET/60B36 (STANDARD - 540 RPM)
*	1	"	TS80	SPROCKET/EXP DRIVE ASSY 30T (OPTIONAL - 540 RPM)
*	1	"	TS81	SPROCKET/60X27T (OPTIONAL - 540 RPM)
*	1	"	TS38	SPROCKET/60B20 (OPTIONAL - 1000 RPM)
*	1	"	TS318	SPROCKET/ASSY 16T (OPTIONAL - 1000 RPM)
*	1	"	TS365	SPROCKET/ASSY 15T (OPTIONAL - 1000 RPM)
*	1	"	TS366	SPROCKET/ASSY 13T (OPTIONAL - 1000 RPM)
8	1	"	TS82	CHAIN/ROLLER #60HE X 100 (540 RPM - 36T SPROCKET)
*	1	"	TS367	CHAIN/ROLLER #60HE X 97 (540 RPM - 30T SPROCKET)
*	1	"	TS368	CHAIN/ROLLER #60HE X 96 (540 RPM - 27T SPROCKET)
*	1	"	TS316	CHAIN/ROLLER #60HE X 92 (1000 RPM - 20T SPROCKET)
*	1	"	TS369	CHAIN/ROLLER #60HE X 90 (1000 RPM - 16T SPROCKET)
*	1	"	TS370	CHAIN/ROLLER #60HE X 89 (1000 RPM - 15T SPROCKET)
*	1	"	TS371	CHAIN/ROLLER #60HE X 88 (1000 RPM - 13T SPROCKET)
9	1	"	TS40	LINK/CONNECTOR #60HE
10	1	"	TS29	SPROCKET/IDLER ASSY
11	1	"	TS84	SPROCKET/ASSY 20T
12	1	"	TS85	BUSHING/BRONZE
13	1	"	TS86	EXPELLER SOLID SHEAR HUB
14	A/R	"	T73	SPACER
15	2	"	F129	TIGHTENER WASHER
16	1	"	TS329	EXPELLER DRIVE SPACER
17	A/R	"	S36	SHIM, 3/16" THICK
*	A/R	"	S409	SHIM, 1/8" THICK
18	2	"	S138	3/8" X 2-3/8" SQ. KEY W/ ROUND ENDS
19	4	"	YSKP10010	SET SCREW, SOCKET, KNURLED CUP PT, 5/16" - 18 X 3/8"
20	2	"	YSKP12010	SET SCREW, SOCKET, KNURLED CUP PT, 3/8"-16 X 1/2"
21	2	"	YBHH08027	BOLT, 1/4" X 1-1/2" GR. 8 YELLOW ZINC
*	4	"	YBHH08027	BOLT, 1/4" X 1-1/2" GR. 8 YELLOW ZINC
22	8	"	YBHH18005	BOLT, 9/16" X 1-1/2" GR. 5
23	1	"	YBHH20055	BOLT, 5/8" X 3-1/2" GR. 5
24	1	"	YWLO20005	WASHER, LOCK, 5/8"
25	1	"	YNHX20005	HEX NUT, 5/8"-11
26	1	"	YNJM12005	HEX NUT, JAM, 3/8"-16
27	8	"	YNFG18005	SERRATED FLANGE NUT, 9/16"
28	2	"	YNL08005	HEX NUT, TOP LOCK, 1/4"-20

NOTE: * MEANS NOT SHOWN

" MEANS SAME AS PREVIOUS MODEL

A/R: AS REQUIRED

Figure 7 Guards/Shields

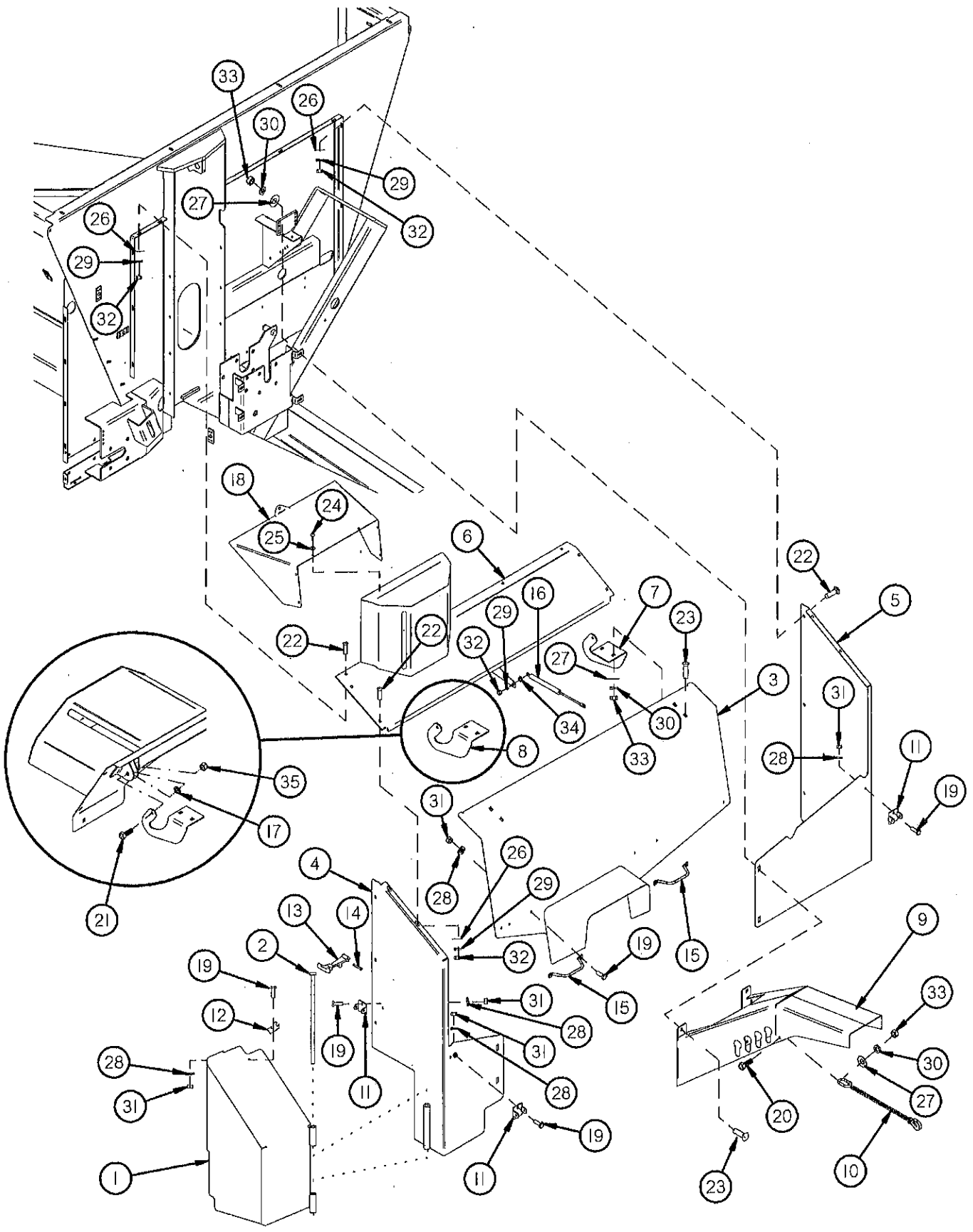


Figure 7 Guards/Shields

ITEM #	QUANTITY		PART #	DESCRIPTION
	5120	5126		
1	1	"	TS87	EXPPELLER DRIVE SHIELD
2	1	"	TS88	EXPPELLER SHIELD HINGE
3	1	"	TS89	FRONT SHIELD DOOR
4	1	"	TS90	FRONT SHIELD RIGHT SIDE
5	1	"	TS91	FRONT SHIELD LEFT SIDE
6	1	"	TS92	FRONT SHIELD TOP
7	1	"	TS93	FRONT SHIELD HINGE RIGHT
8	1	"	TS94	FRONT SHIELD HINGE LEFT
9	1	"	TS95	HOSE HOLDER
10	1	"	TS130	CHAIN PTO HOLDER
11	3	"	X194	LATCH MOUNT
12	3	"	X193	LATCH KEEPER
13	3	"	X192	RUBBER LATCH
14	3	"	X195	LATCH PIN
15	2	"	TS96	SHIELD HANDLE
16	1	"	TS97	GAS SPRING 100 LBS FORCE 13.74" EXT LNG
17	4	"	TS331	SPACER
18	1	—	TS13	FILLER SHIELD
19	8	"	YBHH08015	BOLT, 1/4" X 1/2" GR. 5
20	1	"	YBHH12010	BOLT, 3/8" X 1" GR. 5
21	2	"	YBHH12035	BOLT, 3/8" X 1-1/4" GR. 5
22	13	"	YBCR10030	CARR. BOLT, 5/16" X 3/4" GR. 5
23	8	"	YBCR12010	CARR. BOLT, 3/8" X 1" GR. 5
24	7	—	YSSD08005	SELF DRILLING SCREW, 1/4"-14 X 1"
25	7	—	YWFL06010	WASHER, FLAT, 3/16" USS
26	13	"	YWFL10005	WASHER, FLAT, 5/16" USS
27	9	"	YWFL12005	WASHER, FLAT, 3/8" USS
28	8	"	YWLO08005	WASHER, LOCK, 1/4"
29	13	"	YWLO10005	WASHER, LOCK, 5/16"
30	9	"	YWLO12005	WASHER, LOCK, 3/8"
31	8	"	YNHX08005	HEX NUT, 1/4"-20
32	13	"	YNHX10005	HEX NUT, 5/16"
33	9	"	YNHX12005	HEX NUT, 3/8"-16
34	2	"	YNJM10005	HEX NUT, JAM, 5/16"
35	2	"	YNTL12005	HEX NUT, TOP LOCK, 3/8"-16

NOTE: " MEANS SAME AS PREVIOUS MODEL

— MEANS NOT USED ON THIS MODEL

Figure 8
Splash Guards/Rails

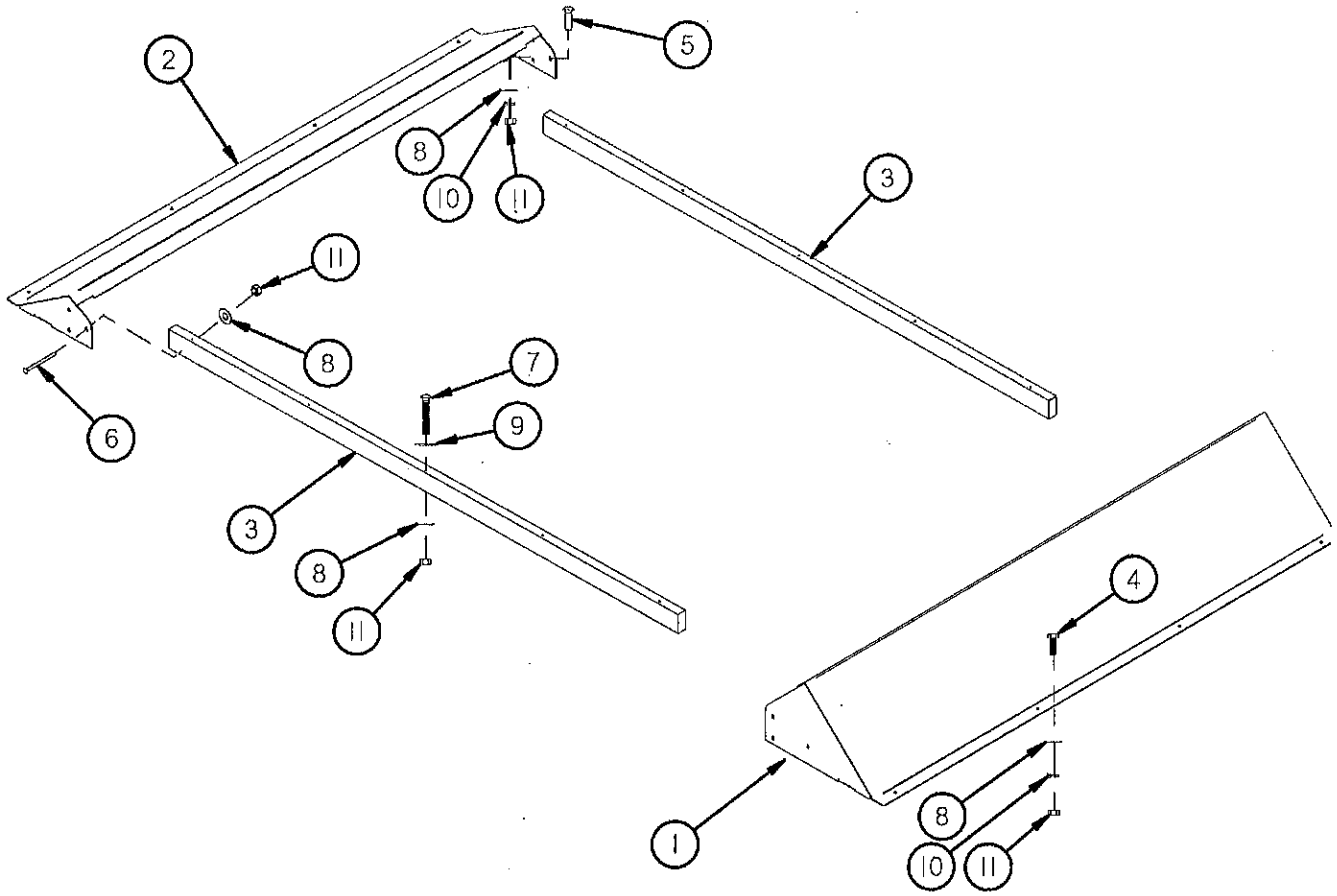


Figure 8 Splash Guards/Rails

ITEM #	QUANTITY		PART #	DESCRIPTION
	5120	5126		
1	1	—	TS99	SPLASH GUARD
*	—	1	TS310	SPLASH GUARD
2	1	—	TS199	BACK SPLASH GUARD
*	—	1	TS311	BACK SPLASH GUARD
3	2	"	TS100	WOOD RAIL
4	8	"	YBHH12010	BOLT, 3/8" X 1" GR. 5
5	4	"	YBCR12010	CARR. BOLT, 3/8" X 1" GR. 5
6	12	"	YBCR12080	CARR. BOLT, 3/8" X 3-1/4" GR. 5
7	10	"	YBCR12123	CARR. BOLT, 3/8" X 6-1/2" GR. 5
8	34	"	YWFL12005	WASHER, FLAT, 3/8" USS
9	10	"	YWFL16005	WASHER, FLAT, 1/2" USS
10	12	"	YWLO12005	WASHER, LOCK, 3/8"
11	34	"	YNHX12005	HEX NUT, 3/8"-16

NOTE: * MEANS NOT SHOWN

— MEANS NOT USED ON THIS MODEL

" MEANS SAME AS PREVIOUS MODEL

Figure 9 Hydraulics

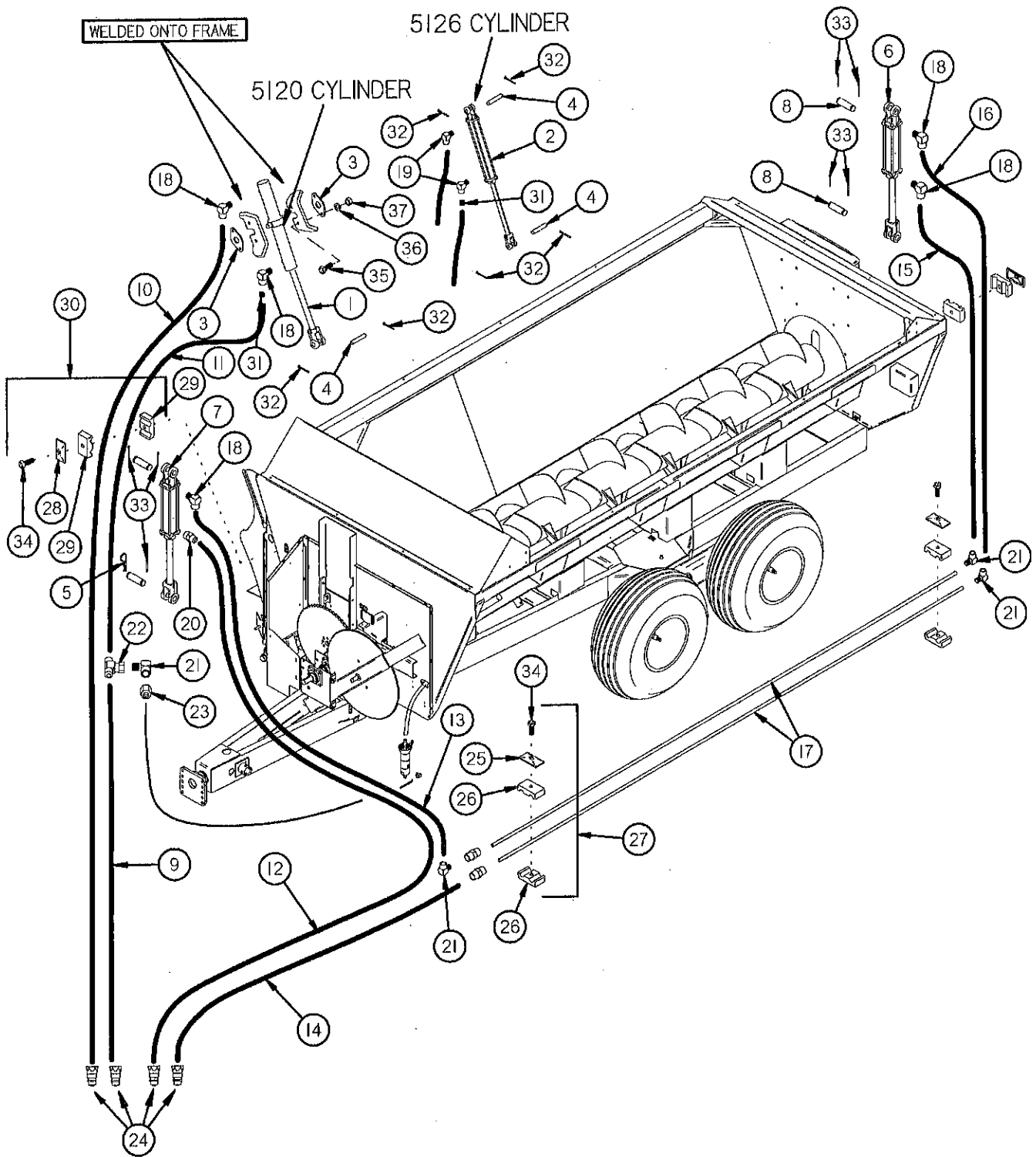


Figure 9 Hydraulics

ITEM #	QUANTITY		PART #	DESCRIPTION
	5120	5126		
1	1	—	TS101	2 X 16 TRUNNION MOUNT CYLINDER
2	—	1	23N111A	2 X 16 CYLINDER
3	2	—	TS103	CYLINDER MOUNT CLIP
4	1	2	LW55	CYLINDER PIN
5	1	"	ES7	HAIR PIN
6	1	"	TS105	3-1/4 X 8 CYLINDER
7	1	"	TS104	3 x 8 CYLINDER
8	4	"	T143	CYLINDER PIN
9	1	"	TS110	HYD. HOSE 1/2" X 91" -8 JIC FEMALE SWIVEL & 1/2 MP
10	1	—	TS106	HYD. HOSE 1/2" X 186" -8 JIC FEMALE SWIVEL & 1/2 MP
*	—	1	TS107	HYD. HOSE 1/2" X 197" -8 JIC FEMALE SWIVEL & 1/2 MP
11	1	—	TS108	HYD. HOSE 1/2" X 91" -8 JIC FEMALE SWIVEL & -8 JIC FEMALE SWIVEL
*	—	1	TS109	HYD. HOSE 1/2" X 94" -8 JIC FEMALE SWIVEL & -8 JIC FEMALE SWIVEL
12	1	"	TS111	HYD. HOSE 1/2" X 154" -8 JIC FEMALE & 1/2 MP
13	1	"	TS112	HYD. HOSE 1/2" X 56" -8 JIC FEMALE SWIVEL & -8 JIC MALE
14	1	"	TS113	HYD. HOSE 1/2" X 112" -8 JIC MALE & 1/2 MP
15	1	—	TS114	HYD. HOSE 1/2" X 38" -8 JIC FEMALE SWIVEL & -8 JIC MALE
*	—	1	TS70	HYD. HOSE 1/2" X 52" -8 JIC FEMALE SWIVEL & -8 JIC MALE
16	1	—	TS115	HYD. HOSE 1/2" X 49" -8 JIC FEMALE SWIVEL & -8 JIC MALE
*	—	1	TS71	HYD. HOSE 1/2" X 42" -8 JIC FEMALE SWIVEL & -8 JIC MALE
17	2	"	TS116	HYDRAULIC LINE
18	5	3	TS135	-8 MALE O-RING TO -8 MALE JIC 90°
19	—	2	TS136	3/8" MALE PIPE TO -8 MALE JIC 90°
20	1	"	TS137	-8 MALE O-RING TO -8 MALE JIC
21	4	"	TS138	-8 FEMALE JIC SWIVEL TO -8 MALE JIC 90°
22	1	"	TS139	-8 JIC SWIVEL BRANCH TEE
23	1	"	TS299	-8 MALE JIC TO 3/8" FEMALE PIPE
24	4	"	DWM205	QUICK COUPLER MALE
25	3	"	TS117	LINE CLAMP CAP
26	6	"	TS118	LINE CLAMP BLOCK
27	3	"	T2008S	DOUBLE STEEL LINE CLAMP
28	12	"	GM69	LINE CLAMP CAP
29	24	"	GM70	LINE CLAMP BLOCK
30	12	"	GM9	HOSE CLAMP 1/2" TWIN (COMPLETE)
31	1	"	TS197	ORIFACE .031
32	2	4	YPCT05010	COTTER PIN, 5/32" X 1-1/2"
33	7	"	YPCT06005	COTTER PIN, 3/16" X 1-1/2"
34	15	"	YBHH10030	BOLT, 5/16" X 1-1/2" GR. 5
35	4	—	YBHH12035	BOLT, 3/8" X 1-1/4" GR. 5
36	4	—	YWLO12005	WASHER, LOCK, 3/8"
37	4	—	YNHX12005	HEX NUT, 3/8"-16

NOTE: * MEANS NOT SHOWN

— MEANS NOT USED ON THIS MODEL

" MEANS SAME AS PREVIOUS MODEL

Figure 10
Tandem Axles (5120)

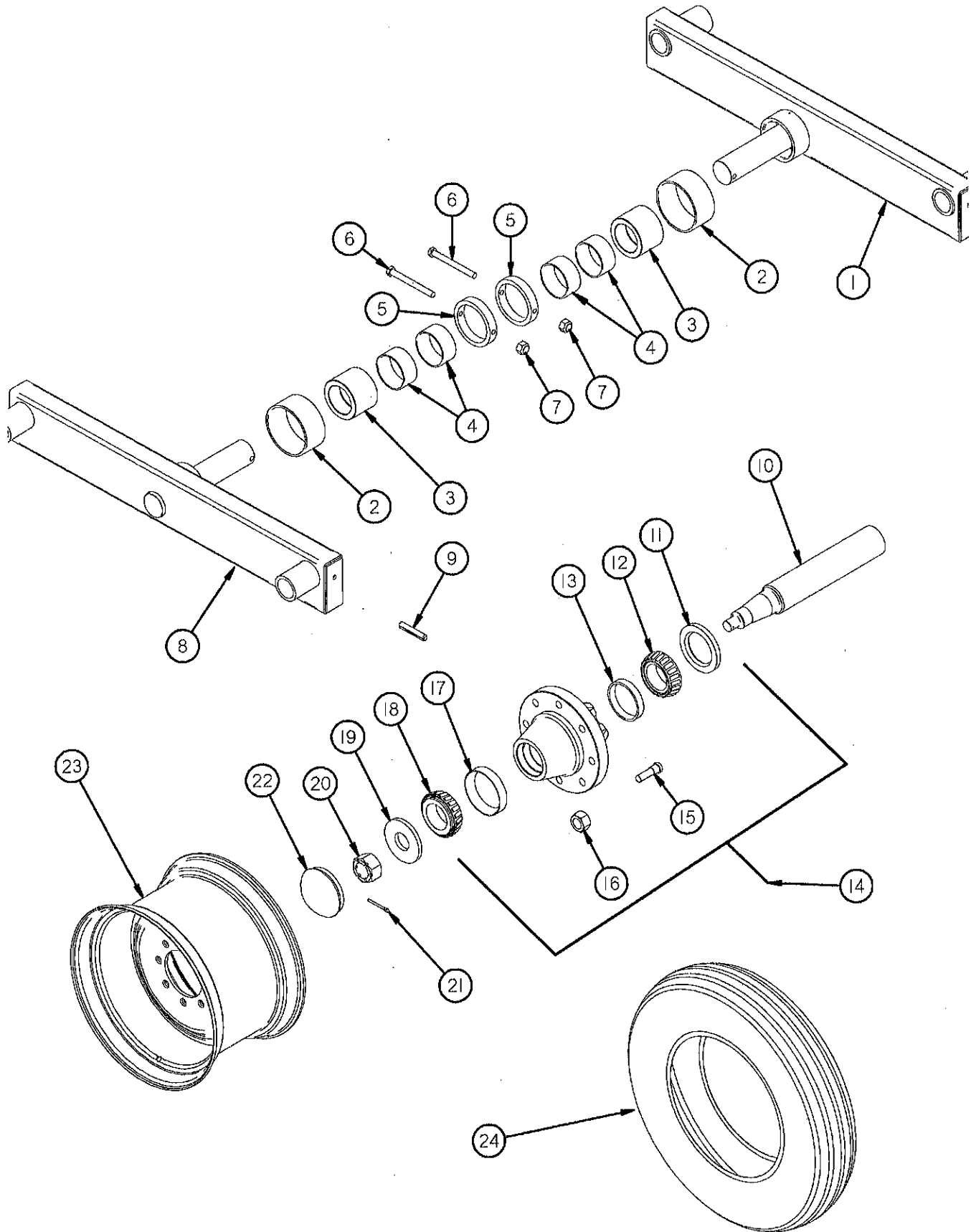


Figure 10 Tandem Axles (5120)

<u>QUANTITY</u>			
<u>ITEM #</u>	<u>5120</u>	<u>PART #</u>	<u>DESCRIPTION</u>
1	1	TS314	LEFT TANDEM MID
*	1	TS132	TANDEM BEAM LH
*	1	TS131	LEFT TANDEM DROP
2	2	B111	AXLE BEARING
3	2	B58	AXLE BUSHING PHENOLIC
4	4	16SV82	INNER AXLE BUSHING
5	2	16SV78	COLLAR FOR AXLE
6	2	YBHH16155	BOLT, 1/2" X 5" GR. 5
7	2	YNL16005	HEX NUT, TOP LOCK, 1/2"-13
8	1	TS315	RIGHT TANDEM MID
*	1	TS134	TANDEM BEAM RH
*	1	TS133	RIGHT TANDEM DROP
9	4	YPEX16020	EXPANSION PIN, 1/2" X 4"
10	4	16SV203	SPINDLE 2.5 X 18.5
11	4	B90	SEAL
12	4	B91	INNER BEARING
13	4	B91A	INNER RACE
14	4	16SV398	COMPLETE HUB 821 8 BOLT W/ TIMKEN BEARINGS
15	32	YBSD20010	STUD BOLT, 5/8"-18 UNF X 2-1/2" (7/8" SHOULDER)
16	32	YNWL20005	WHEEL NUT, 5/8"-18 UNF
17	4	B94A	OUTER RACE
18	4	B94	OUTER BEARING
19	4	B4	WASHER
20	4	YNL28005	HEX NUT, SLOTTED, 7/8"-14
21	4	YPCT05020	COTTER PIN, 5/32" X 1-3/4"
22	4	B2	HUB CAP
23	4	23N179	WHEEL 8.25 X 22.5
*	4	12V36	WHEEL 14 X 16.1
*	4	16SV89	WHEEL 13.5 X 22.5
24	4	23N180	TIRE 11 X 22.5
*	4	23N54	TIRE 16.5 X 16.1
*	4	16SV88	TIRE (TRUCK) 425 X 22.5

NOTE: * MEANS NOT SHOWN

Figure 11
Tandem Axles (5126)

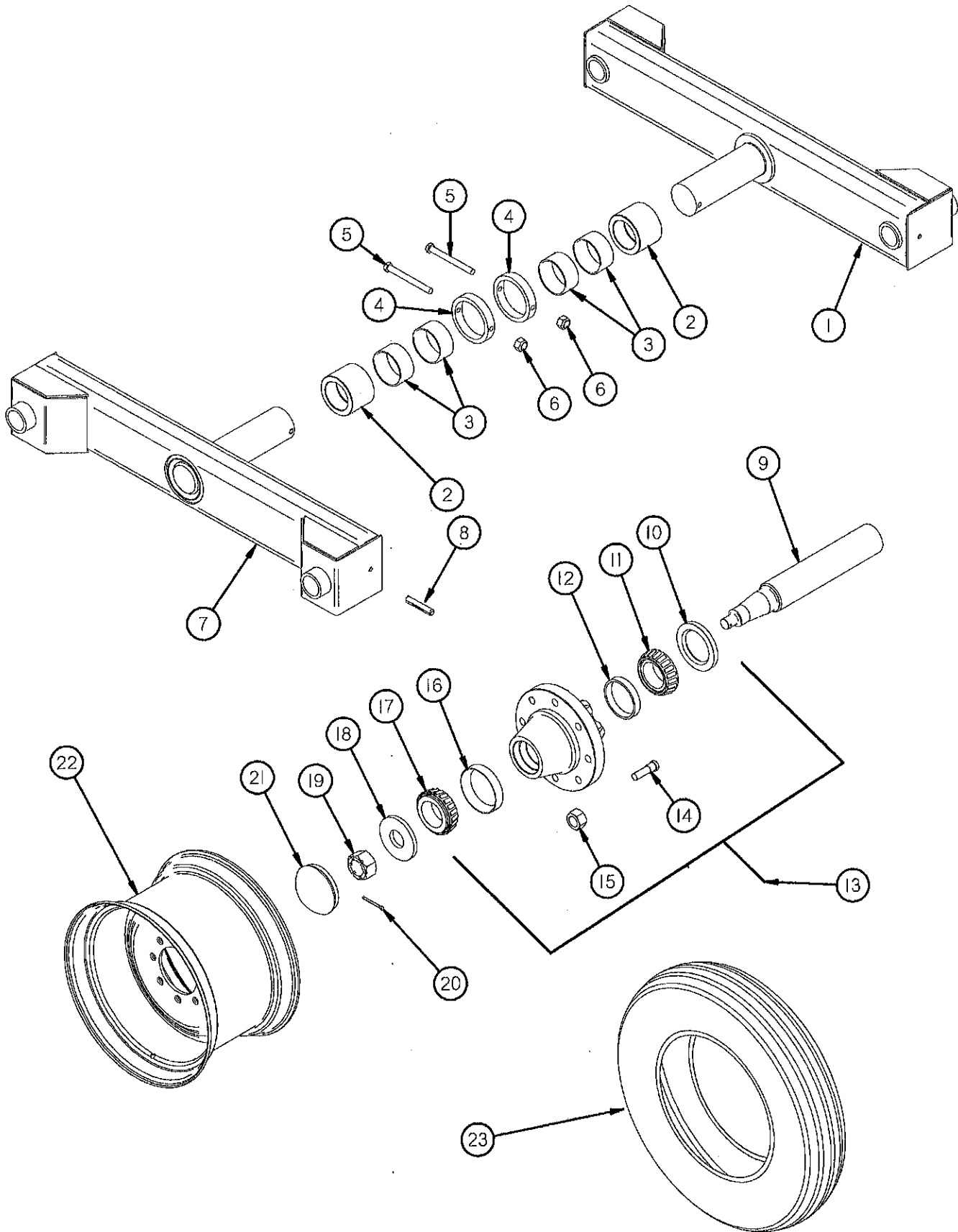


Figure 11 Tandem Axles (5126)

<u>QUANTITY</u>			
<u>ITEM #</u>	<u>5126</u>	<u>PART #</u>	<u>DESCRIPTION</u>
1	1	16SV74	TANDEM BEAM LH
2	2	16SV75	OUTER AXLE BEARING
3	4	16SV83	INNER AXLE BEARING
4	2	16SV214	COLLAR FOR AXLE
5	2	YBHH16155	BOLT, 1/2" X 5" GR. 5
6	2	YNL16005	HEX NUT, TOP LOCK, 1/2"-13
7	1	16SV81	TANDEM BEAM RH
8	4	YPEX16020	EXPANSION PIN, 1/2" X 4"
9	4	16SV85	SPINDLE 2.5 X 19.625
10	4	B90	SEAL
11	4	B91	INNER BEARING
12	4	B91A	INNER RACE
13	4	16SV398	COMPLETE HUB 821 8 BOLT W/ TIMKEN BEARINGS
14	32	YBSD20010	STUD BOLT, 5/8"-18 UNF X 2-1/2" (7/8" SHOULDER)
15	32	YNWL20005	WHEEL NUT, 5/8"-18 UNF
16	4	B94A	OUTER RACE
17	4	B94	OUTER BEARING
18	4	B4	WASHER
19	4	YNSL28005	HEX NUT, SLOTTED, 7/8"-14
20	4	YPCT05020	COTTER PIN, 5/32" X 1-3/4"
21	4	B2	HUB CAP
22	4	12V36	WHEEL 14 X 16.1
*	4	33SV105	WHEEL 16 X 16.1
*	4	16SV89	WHEEL 13.5 X 22.5
23	4	23N54	TIRE 16.5L X 16.1
*	4	12V37	TIRE 19L X 16.1
*	4	16SV88	TIRE (TRUCK) 425 X 22.5

NOTE: * MEANS NOT SHOWN

Figure 12
Oiler Kit

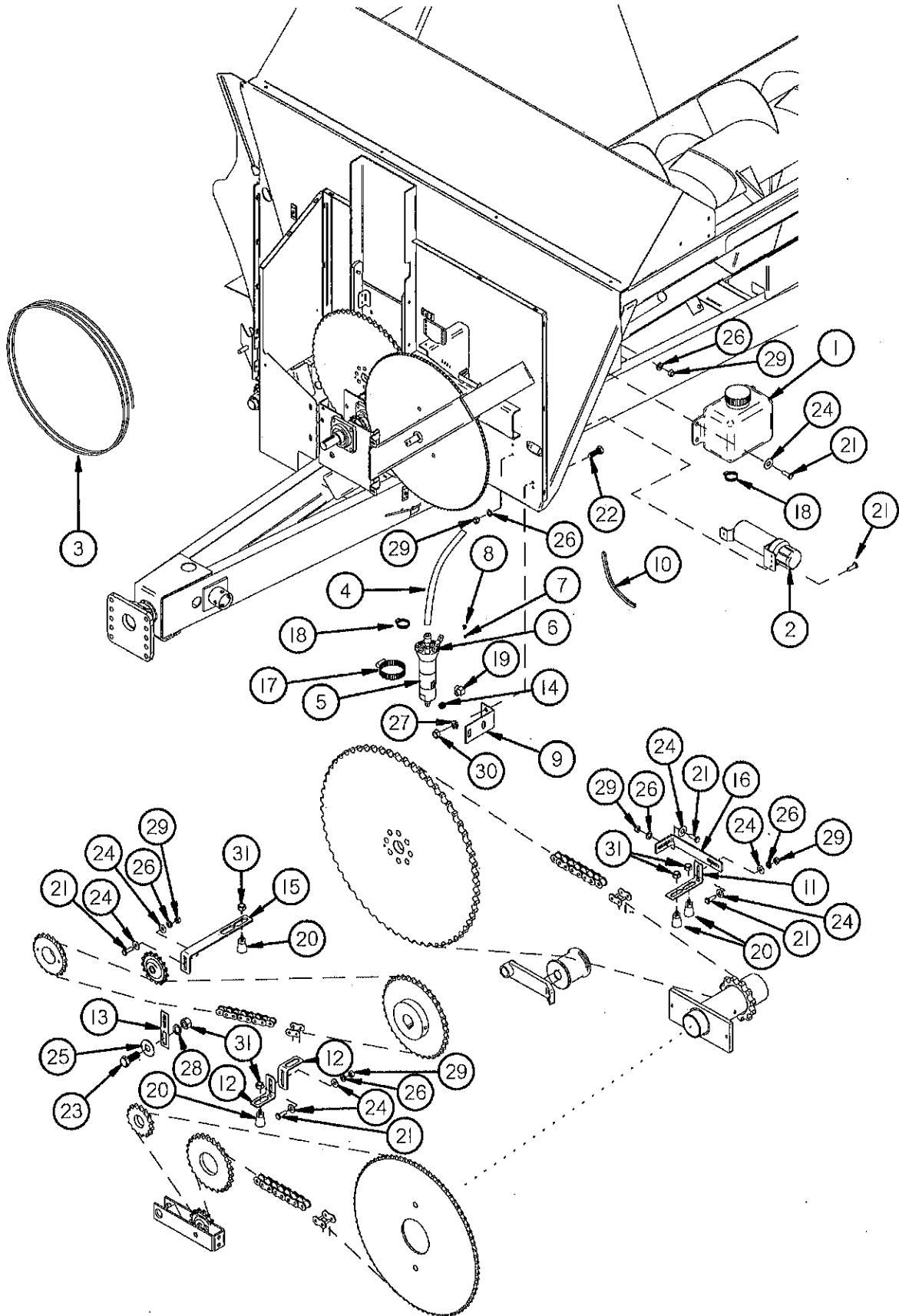


Figure 12 Oiler Kit

ITEM #	QUANTITY		PART #	DESCRIPTION
	5120	5126		
1	1	"	HGV63	RESERVOIR
2	1	"	S522	MANUAL HOLDER
3	1	"	HGV71	OIL TUBE
4	1	"	HGV66	FILLER HOSE
5	1	"	HGV82	PUMP (COMPLETE)
6	4	"	HGV86	STANDOFF
7	4	"	HGV87	FERRULE
8	4	"	HGV85	SLEEVE NUT
9	1	"	HGV68	PUMP MOUNT BRACKET
10	1	"	HGV77	EDGING
11	2	"	HGV69	BRUSH BRACKET LONG
12	2	"	TS98	OILER BRUSH BRACKET SINGLE
13	1	"	HGV70	BRACKET MOUNT
14	1	"	TS198	ORIFACE .015 (4XHX7-S)
15	1	"	TS322	EXTRA LONG BRUSH BRACKET
16	1	"	TS196	OILER HANGER
*	1	"	HGV62	COMPLETE OILER KIT
17	1	"	HGV74	2" HOSE CLAMP
18	2	"	HGV75	1" HOSE CLAMP
19	1	"	HGV65	O-RING/JIC ELBOW
20	4	"	HGV67	BRUSH
21	11	"	YBHH08100	BOLT, 1/4" X 3/4" GR. 5
22	2	"	YBHH12135	BOLT, 3/8" X 3/4" GR. 5
23	1	"	YBHH16045	BOLT, 1/2" X 1-1/4" GR. 5
24	11	"	YWFL08005	WASHER, FLAT, 1/4" USS
25	1	"	YWFL16005	WASHER, FLAT, 1/2" USS
26	11	"	YWLO08005	WASHER, LOCK, 1/4"
27	2	"	YWLO12005	WASHER, LOCK, 3/8"
28	1	"	YWLO16005	WASHER, LOCK, 1/2"
29	11	"	YNHX08005	HEX NUT, 1/4"-20
30	2	"	YNHX12005	HEX NUT, 3/8"-16
31	5	"	YNHX16005	HEX NUT, 1/2"

NOTE: " MEANS SAME AS PREVIOUS MODEL

* MEANS NOT SHOWN

Figure 13
Front Grease Lines

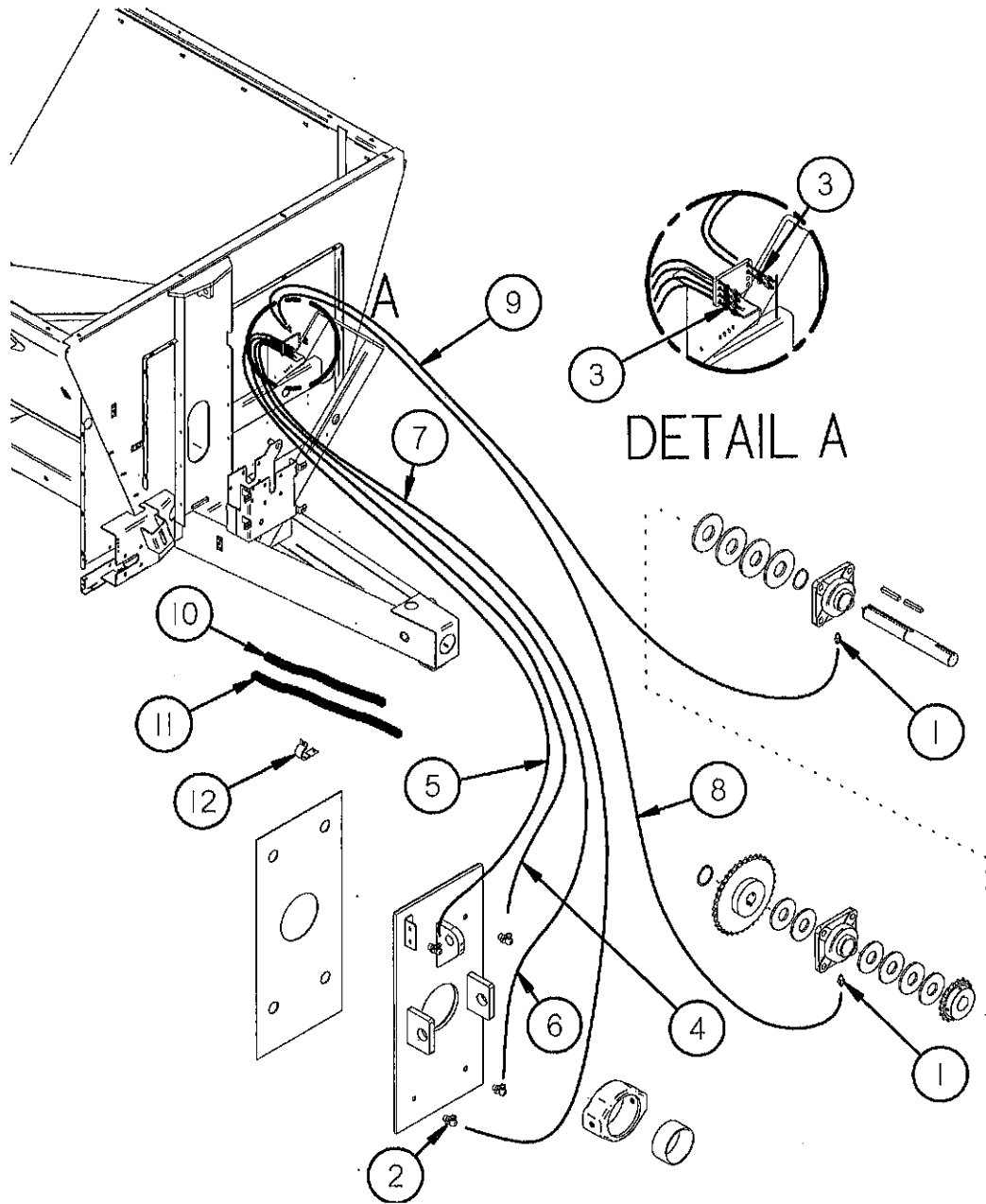


Figure 13 Front Grease Lines

<u>ITEM #</u>	<u>QUANTITY</u>		<u>PART #</u>	<u>DESCRIPTION</u>
	<u>5120</u>	<u>5126</u>		
1	2	"	TS323	1/4"-28 TO 1/8" PIPE ADAPTER
2	4	"	GM30	1/8" 90° GREASE LINE ADAPTER
3	6	"	YNML99005	M10-1.0 JAM NUT A2 SS
4	1	"	TS119	GREASE LINE - 23"
5	1	"	TS120	GREASE LINE - 29.5"
6	1	"	TS121	GREASE LINE - 38.5"
7	1	"	TS122	GREASE LINE - 45.5"
8	1	"	TS123	GREASE LINE - 60"
9	1	"	TS124	GREASE LINE - 63.75"
10	1	"	TS246	SPLIT LOOM 3/4" X 18"
11	1	"	TS305	SPLIT LOOM 3/4" X 24"
12	1	"	HGV162	1/2" RUBBER WIRE HOLDER

NOTE: " MEANS SAME AS PREVIOUS MODEL

Figure 14
Lighting

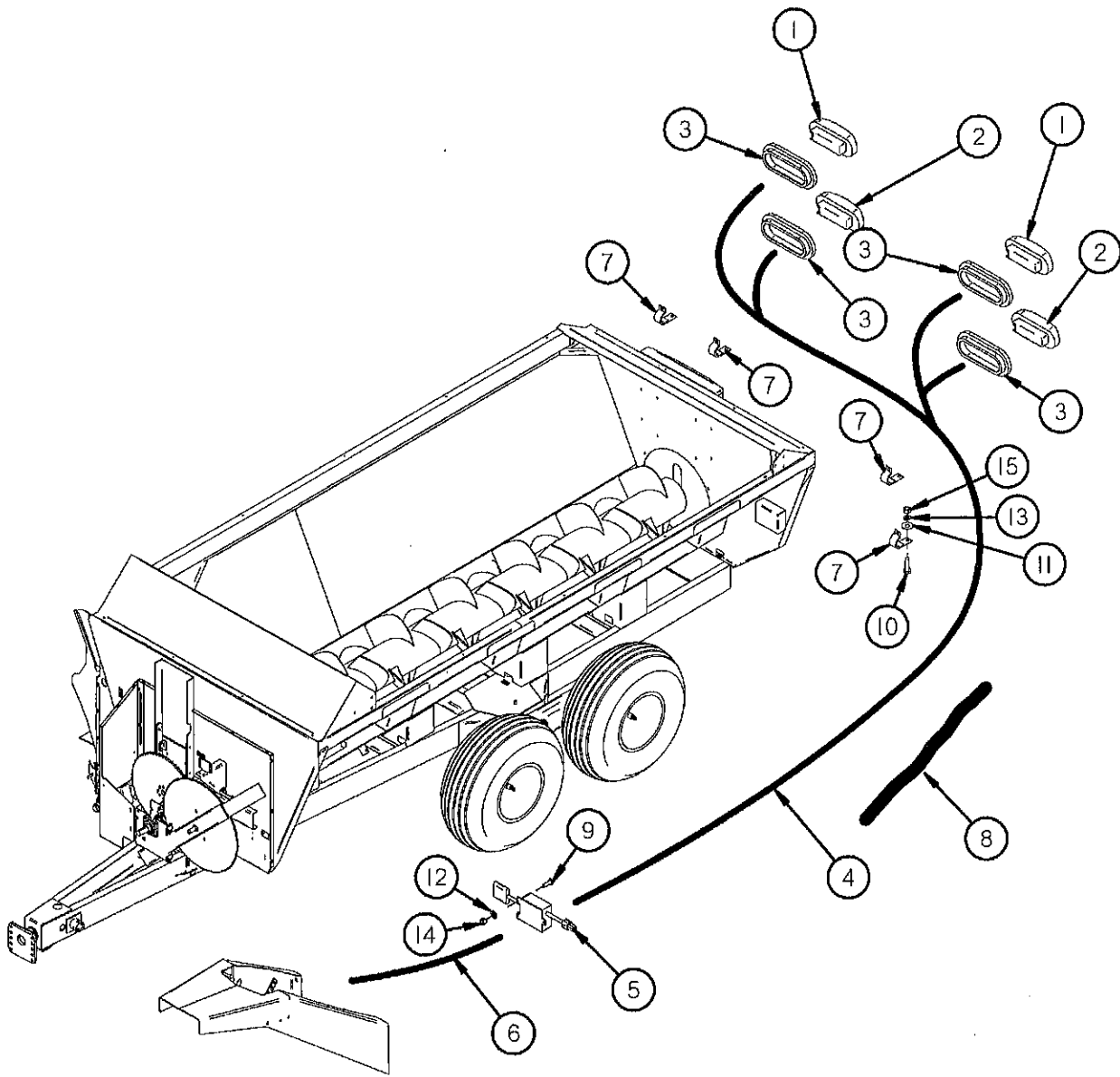


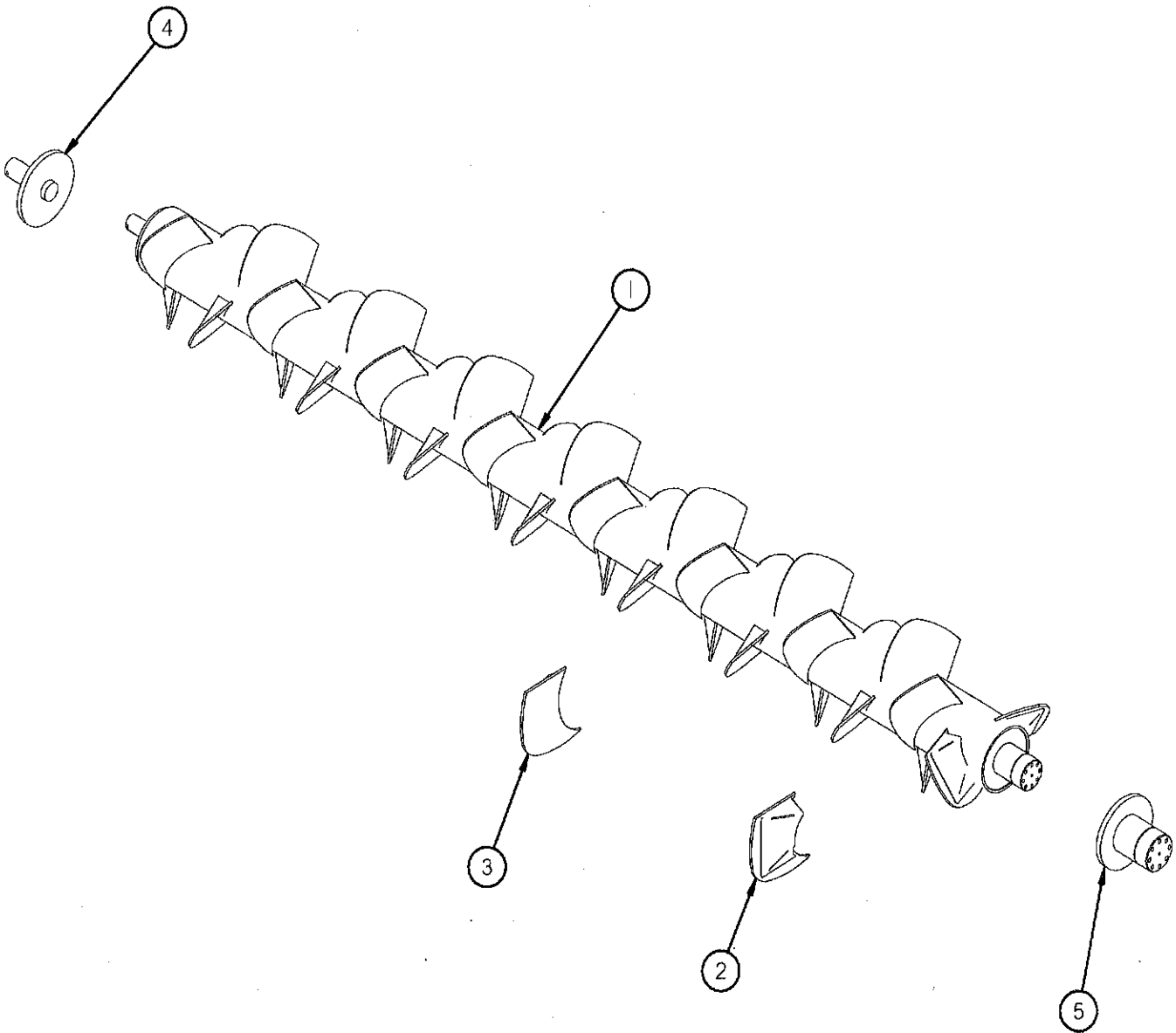
Figure 14 Lighting

ITEM #	QUANTITY		PART #	DESCRIPTION
	5120	5126		
1	2	"	S309	YELLOW HAZARD LIGHT
2	2	"	S310	RED TAIL LIGHT
3	4	"	S308	RUBBER LIGHT MOUNT
4	1	"	56N155	TAIL LIGHT LOOM
5	1	"	S441	FLASHER MODULE
6	1	"	TS317	HARNESS MODULE TO TRACTOR
7	4	"	HGV162	1/2" RUBBER WIRE HOLDER
8	1	"	TS129	SPIRAL WRAP, 30"
9	3	"	YBHH08100	BOLT, 1/4" X 3/4" GR. 5
10	4	"	YBHH10105	BOLT, 5/16" X 3/4" GR. 5
11	4	"	YWFL10005	WASHER, FLAT, 5/16" USS
12	3	"	YWLO08005	WASHER, LOCK, 1/4"
13	4	"	YWLO10005	WASHER, LOCK, 5/16"
14	3	"	YNHX08005	HEX NUT, 1/4"-20
15	4	"	YNHX10005	HEX NUT, 5/16"
*	1	"	S317	TRACTOR CORD

NOTE: * MEANS NOT SHOWN

" MEANS SAME AS PREVIOUS MODEL

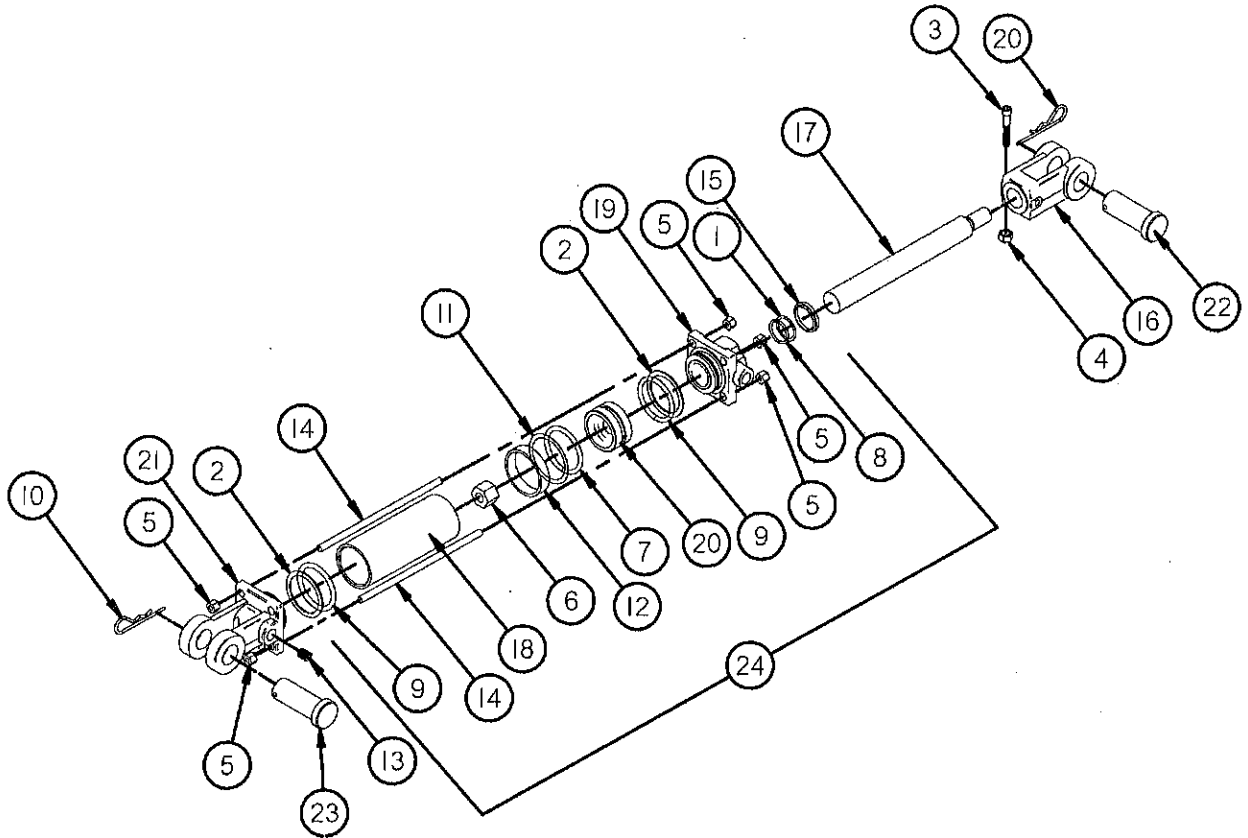
Figure 15 Auger



ITEM #	QUANTITY		PART #	DESCRIPTION
	5120	5126		
1	1	"	TS1	AUGER
2	2	"	TS125	AUGER PADDLE FRONT
3	37	"	TS126	AUGER PADDLE REAR
4	1	"	TS127	AUGER REAR ASSEMBLY
5	1	"	TS128	AUGER INPUT ASSEMBLY

NOTE: " MEANS SAME AS PREVIOUS MODEL

Figure 16 Auger Front/Rear Hydraulic Cylinder

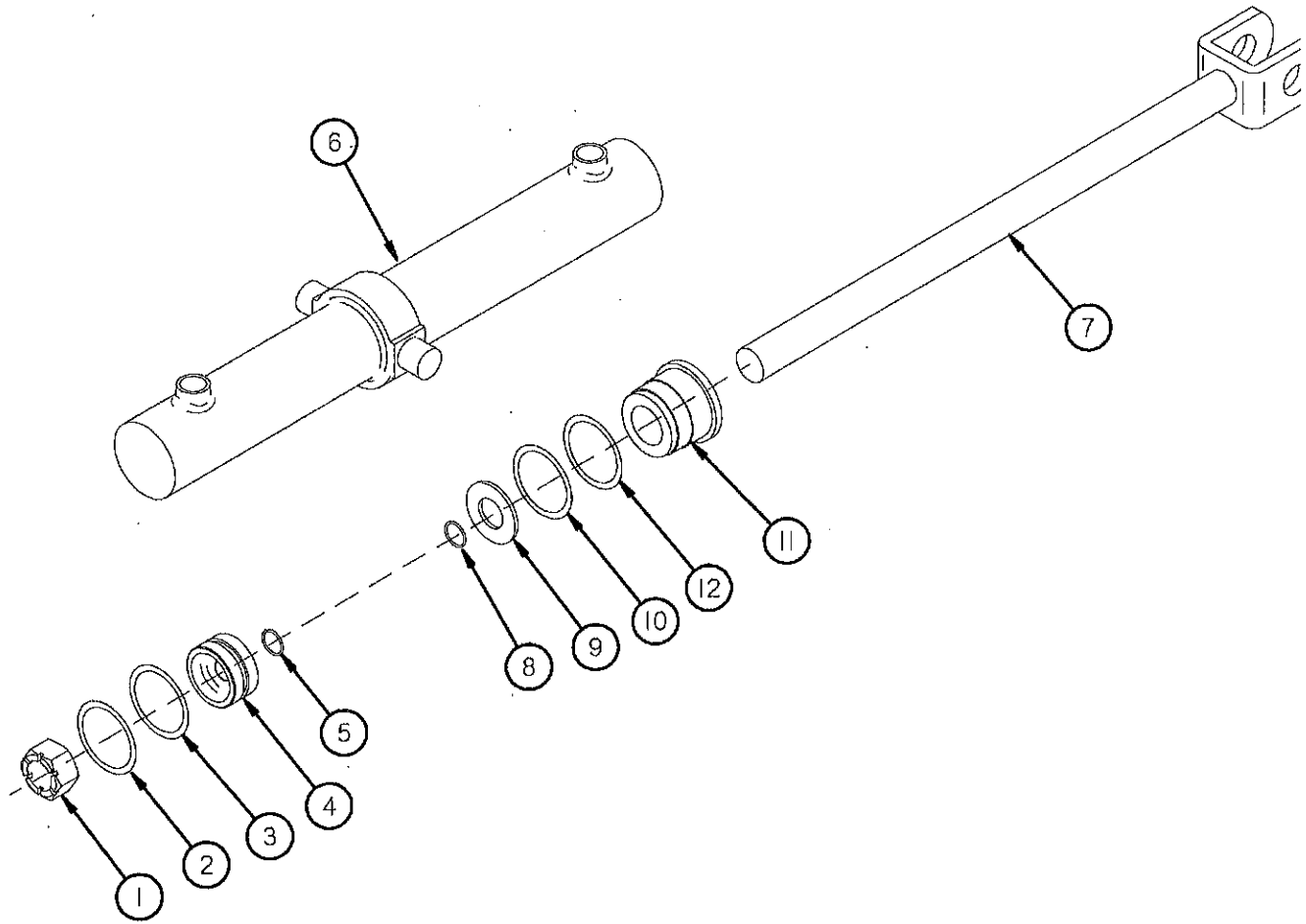


ITEM #	QUANTITY		DESCRIPTION	
	5120/5126	3" BORE		3-1/4" BORE
1	1	TS140	"	BACK-UP (ROD)
2	2	TS141	TS164	BACK-UP (HEAD & BASE)
3	1	TS142	"	CAPSCREW
4	1	TS143	"	CLEVIS NUT
5	8	TS144	TS165	TIE ROD NUT
6	1	TS145	TS166	PISTON NUT
7	1	TS146	TS167	O-RING (PRELOAD)
8	1	TS147	"	O-RING (ROD)
9	2	TS148	TS168	O-RING (HEAD & BASE)
10	2	TS149	"	PIN CLIP
11	1	TS150	TS169	TEFLON RING
12	1	TS151	TS170	WEAR RING
13	1	TS152	"	PLUG ASSY (3/4-16 SAE)
14	4	TS153	TS171	TIE ROD
15	1	TS154	"	WIPER
16	1	TS155	"	CLEVIS ASSEMBLY
17	1	TS156	TS172	ROD
18	1	TS157	TS173	TUBE
19	1	TS158	TS174	HEAD (3/4-16 SAE PORT)
20	1	TS159	TS175	PISTON NUT
21	1	TS160	TS176	BASE (3/4-16 SAE PORT)
22	1	TS161	"	CLEVIS PIN (ROD) 1" DIA.
23	1	TS162	"	CLEVIS PIN (BASE) 1" DIA.
24	1	TS163	TS177	SEAL KIT

NOTE: " MEANS SAME AS PREVIOUS MODEL

Figure 17

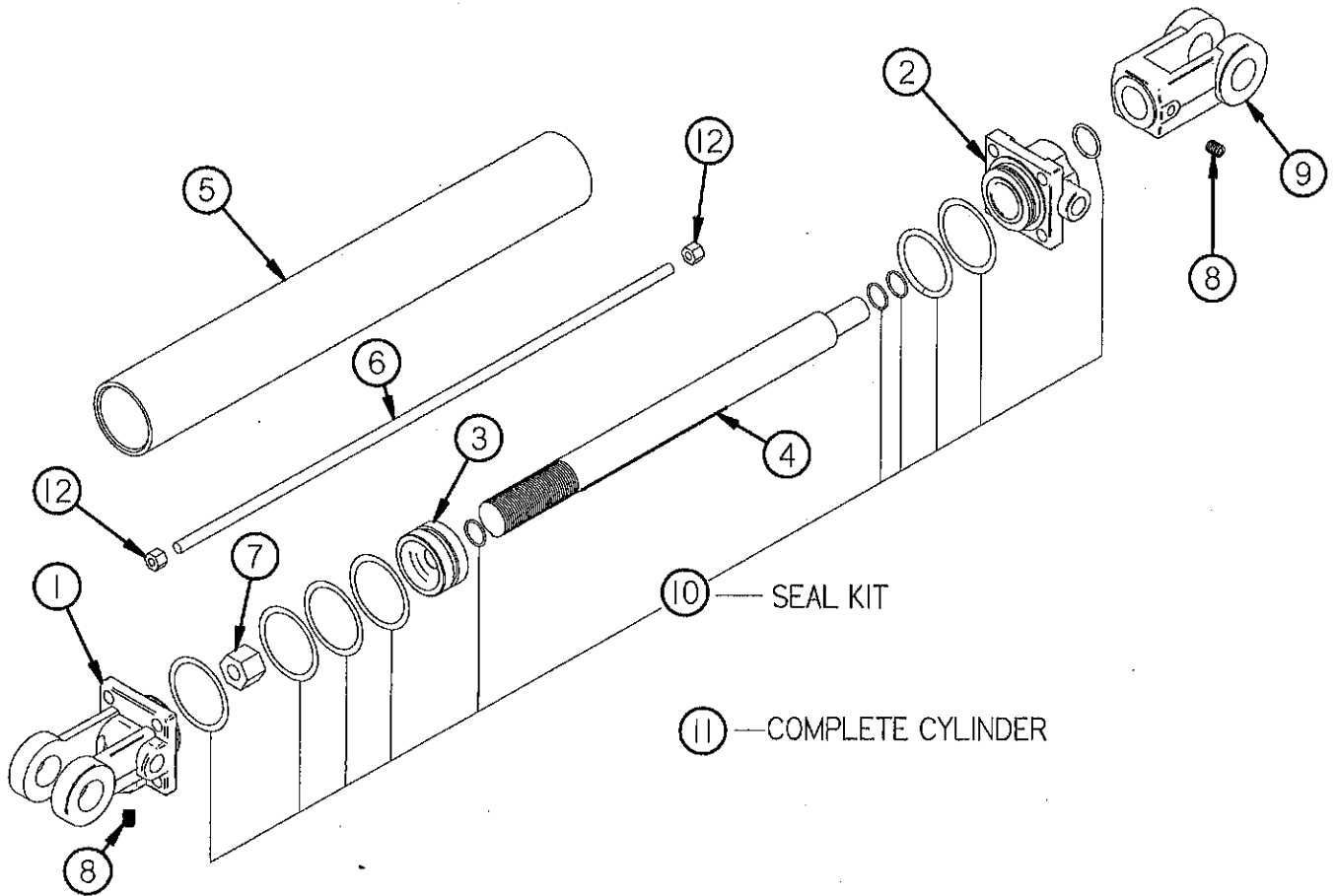
5120 Expeller Door Trunnion Mount Hydraulic Cylinder



ITEM #	5120	PART #	DESCRIPTION
1	1	YNSL24010	HEX NUT, SLOTTED, 3/4"-16
2	1	TS344	WEAR RING
3	1	TS345	CAPPED T-SEAL
4	1	TS346	PISTON
5	1	TS347	O-RING
6	1	TS348	JACKET ASSEMBLY
7	1	TS349	PISTON ROD
8	1	TS350	O-RING
9	1	TS351	BACKUP WASHER
10	1	TS352	POLYPAK
11	1	TS353	GLAND NUT
12	1	TS354	METALLIC WIPER
*	1	TS355	SEAL KIT

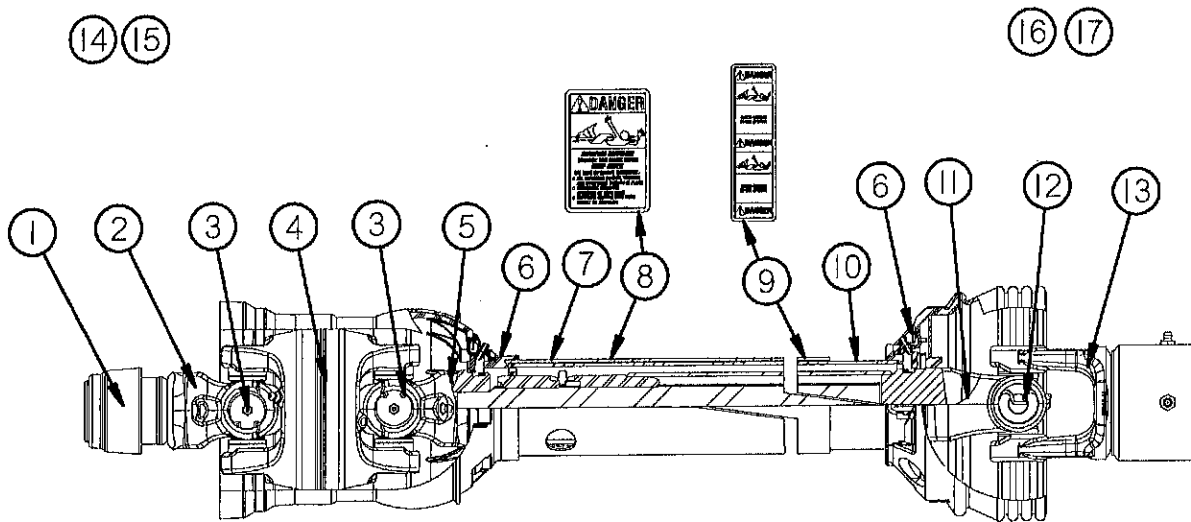
NOTE: * MEANS NOT SHOWN

Figure 18
5126 Expeller Door Hydraulic Cylinder 2" x 16"



<u>QUANTITY</u>			
<u>ITEM #</u>	<u>5126</u>	<u>PART #</u>	<u>DESCRIPTION</u>
1	1	23N142	CLEVIS CAP
2	1	23N143	ROD CAP
3	1	23N144	PISTON
4	1	23N145A	ROD
5	1	23N146	CYLINDER TUBE
6	4	23N147	TIE ROD
7	1	23N148	PISTON NUT
8	2	23N149	PLUG
9	1	23N150	ROD CLEVIS
10	1	23N151	SEAL KIT
11	1	23N111A	COMPLETE HYDRAULIC CYLINDER
12	8	YNHX12005	HEX NUT, 3/8"-16

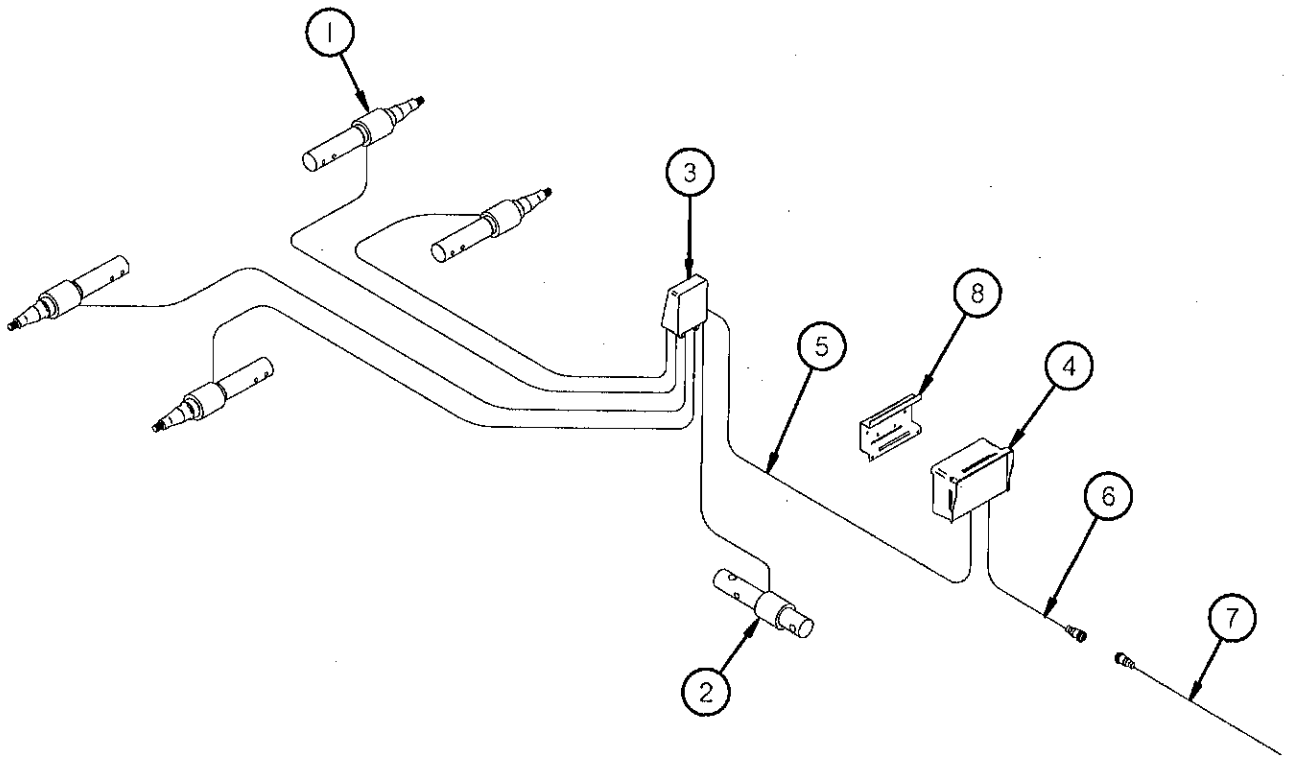
Figure 19 PTO



ITEM #	540 RPM	1000RPM (1-3/8)	1000 RPM (1-3/4)	DESCRIPTION
1	16SV274	"	16SV275	SAFETY SLIDE LOCK REPAIR KIT
2	TS178	TS190	TS193	SAFETY SLIDE LOCK YOKE ASSEMBLY
3	TS179	"	"	CROSS KIT
4	TS180	"	"	CENTER HOUSING
5	TS181	"	"	YOKE & SHAFT
6	16SV383	"	"	GUARD REPAIR KIT
7	TS182	"	"	OUTER GUARD
8	16SV283	"	"	SAFETY SIGN 13-10021
9	16SV388	"	"	SAFETY SIGN 13-10022
10	TS183	"	"	INNER GUARD
11	TS184	"	"	YOKE, TUBE & SLIP SLEEVE
12	16SV179	"	"	35R CROSS & BEARING KIT
13	TS185	"	"	OR BALL SHEAR ASSEMBLY
14	TS186	TS191	TS194	JOINT & SHAFT HALF ASSM. W/GUARD
15	TS187	TS192	TS195	JOINT & SHAFT HALF ASSM.
16	TS188	"	"	JOINT & TUBE HALF ASSM. W/GUARD
17	TS189	"	"	JOINT & TUBE HALF ASSM.
18	TS300	—	—	COMPLETE PTO (#245-25120)
*	—	TS301	—	COMPLETE PTO (#245-25121)
*	—	—	TS302	COMPLETE PTO (#245-25122)

NOTE: — MEANS NOT USED ON THIS MODEL
 " MEANS SAME AS PREVIOUS MODEL
 * MEANS NOT SHOWN

Figure 20 Scale



ITEM #	QUANTITY		PART #	DESCRIPTION
	5120	5126		
1	4	—	TS333	SPINDLE LOAD CELL
*	—	4	TS334	SPINDLE LOAD CELL
2	1	"	GM403	HITCH LOAD CELL
3	1	"	TS83	JUNCTION BOX
4	1	"	TS339	SCALE DISPLAY
*	1	"	TS337	SCALE DISPLAY W/GPS (OPTIONAL)
5	1	"	TS338	JUNCTION BOX CORD
6	1	"	GM405	POWER CORD
7	1	"	16SV269	TRACTOR POWER CORD
8	1	"	GM408	SCALE HANGER BRACKET

NOTE: * MEANS NOT SHOWN
 — MEANS NOT USED ON THIS MODEL
 " MEANS SAME AS PREVIOUS MODEL

H&S 5120 "Top Shot" Specifications

5120

General Specs

Cubic Ft. Struck Level	268.6		
Gallon Capacity	2009		
Tank Length	16'		
Overall Length	22' 8"		
Tank Width - Top	76"		
Auger Diameter	24"		
Poly Lined Tank	Left Side		
Overrunning Clutch	Yes		
Shear Bolt Protection	Yes		
PTO	540 RPM Std. 1000 RPM Opt.		
Expeller Size	40"		
Front and Rear Splashguards	Yes		
Weight	6,860#		
		Drop Axle Specs w/295 x 22.5 Tires	Drop Axle Specs w/16.1 x 16.5 Tires
Side Loading Height		69"	68.5"
Height @ Rear Splash		70"	69.5"
Height @ Front Splash		76"	75.5"
Overall Width		85"	91"
		Standard Axle Specs w/295 x 22.5 Tires	Standard Axle Specs w/16.1 x 16.5 Tires or 385x22.5 Truck Tires
Side Loading Height		72.5"	72"
Height @ Rear Splash		73.5"	73"
Height @ Front Splash		79.5"	79"
Overall Width		85"	91"
		High Axle Specs w/295 x 22.5 Tires	High Axle Specs w/16.1 x 16.5 Tires or 385x22.5 Truck Tires
Side Loading Height		74.5"	74"
Height @ Rear Splash		75.5"	75"
Height @ Front Splash		81.5"	81"
Overall Width		85"	91"

Note: 385x22.5 Truck Tires will NOT fit on the Drop Axle

SPECIFICATIONS ARE SUBJECT TO CHANGE WITHOUT NOTICE

H&S 5126 "Top Shot" Specifications

5126

General Specs

Cubic Ft. Struck Level	347			
Gallon Capacity	2596			
Tank Width - Top	87"			
Tank Length	16'			
Overall Length	22' 8"			
Auger Diameter	24"			
Poly Lined Tank	Left Side			
Overrunning Clutch	Yes			
Shear Bolt Protection	Yes			
PTO	540 RPM Std. 1000 RPM Opt.			
Expeller Size	40"			
Front and Rear Splashguards	Yes			
Weight	7,880#			
		<u>Specs</u> w/16.1 x 16.5 Tires	<u>Specs</u> w/425x22.5 Tires	<u>Specs</u> w/19L x 16.1 Tires
Side Loading Height		81"	83"	84"
Height @ Rear Splash		82"	84"	85"
Height @ Front Splash		88"	90"	91"
Overall Width		103"	102"	105"

SPECIFICATIONS ARE SUBJECT TO CHANGE WITHOUT NOTICE

H&S MFG. CO.

products approved

for the

FEMA

SEAL OF QUALITY

